

For Research Use Only

# Anti-Mouse CD25/IL-2RA Rabbit Recombinant Antibody, PBS Only

Catalog Number: 98288-1-PBS



## Basic Information

Catalog Number:	98288-1-PBS	GenBank Accession Number:	NM_008367.3	Purification Method:	Protein A purification
Concentration:	1mg, 2 mg/ml	GeneID (NCBI):	16184	CloneNo.:	242494H5
Source:	Rabbit	UNIPROT ID:	P01590		
Isotype:	IgG	Full Name:	interleukin 2 receptor, alpha chain		
Immunogen Catalog Number:	EG3087	Calculated MW:	31 kDa		

## Applications

Tested Applications:  
FC

Species Specificity:  
mouse

## Background Information

Proliferation of T lymphocytes is triggered by the interaction of IL-2 with its specific receptor following T lymphocyte activation. The receptor for IL-2 has three forms, generated by different combinations of three different proteins, the alpha chain (IL-2R alpha), the beta chain (IL-2R beta), and the gamma chain (IL-2R gamma) (PMID: 8476561). IL-2R alpha (also known as CD25) is a type I transmembrane protein present on activated T cells, activated B cells, some thymocytes, myeloid precursors, and oligodendrocytes. CD25 is also found on natural CD4<sup>+</sup>Foxp3<sup>+</sup> Treg cells and a subset of human CD4<sup>+</sup> memory T cells (PMID: 22585674).

## Storage

Storage:  
Store at -80°C.  
**The product is shipped with ice packs. Upon receipt, store it immediately at -80°C**

Storage Buffer:  
PBS only, pH7.3

For technical support and original validation data for this product please contact:

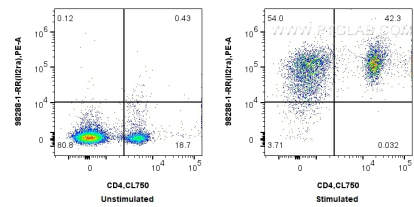
T: 4006900926

E: [Proteintech-CN@ptglab.com](mailto:Proteintech-CN@ptglab.com)

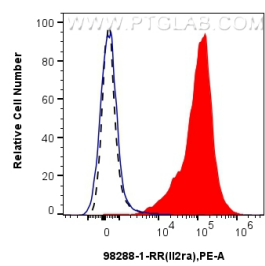
W: [ptgcn.com](http://ptgcn.com)

**This product is exclusively available under Proteintech Group brand and is not available to purchase from any other manufacturer.**

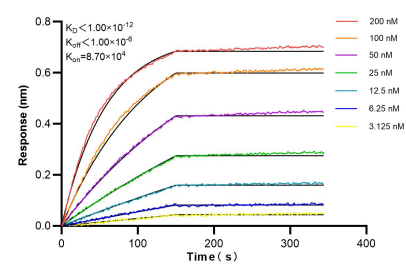
Selected Validation Data



1x10<sup>6</sup> untreated or anti-CD3/CD28 treated mouse splenocytes were surface stained with 0.25 ug Anti-Mouse CD25/IL-2RA Rabbit RecAb (98288-1-RR, Clone: 242494H5) and PE-Conjugated Goat Anti-Rabbit IgG(H+L). Cells were co-stained with CoraLite® Plus 750 Anti-Mouse CD4 (GK1.5) (CL750-65104, Clone: GK1.5). Cells were not fixed. This data was developed using the same antibody clone with 98288-1-PBS in a different storage buffer formulation.



1x10<sup>6</sup> anti-CD3/CD28 treated mouse splenocytes were surface stained with 0.25 ug Anti-Mouse CD25/IL-2RA Rabbit RecAb (98288-1-RR, Clone: 242494H5) (red) or 0.25 ug Rabbit IgG Isotype Control RecAb (98136-1-RR, Clone: 240953C9) (blue), and PE-Conjugated Goat Anti-Rabbit IgG(H+L). 1x10<sup>6</sup> untreated mouse splenocytes were surface stained with 0.25 ug Anti-Mouse CD25/IL-2RA Rabbit RecAb (98288-1-RR, Clone: 242494H5) (black, dashed) and PE-



Bi-layer interferometry (BLI) kinetic assays of 98288-1-RR against Mouse CD25/IL-2RA were performed. The affinity constant is below 1 pM.