

For Research Use Only

Anti-Mouse LAIR1 Rabbit Recombinant Antibody

Catalog Number: 98286-1-RR



Basic Information

Catalog Number:

98286-1-RR

Concentration:

100ug, 1000 ug/ml

Source:

Rabbit

Isotype:

IgG

GenBank Accession Number:

NM_001113474.1

GeneID (NCBI):

52855

UNIPROT ID:

Q8BG84-1

Full Name:

leukocyte-associated Ig-like receptor
1

Calculated MW:

30kDa

Purification Method:

Protein A purification

CloneNo.:

242226E10

Recommended Dilutions:

FC: 0.13 ug per 10⁶ cells in 100 μ l
suspension

Applications

Tested Applications:

FC

Species Specificity:

mouse

Positive Controls:

FC : mouse splenocytes,

Background Information

Leukocyte-associated immunoglobulin-like receptor 1 (LAIR1) is a transmembrane glycoprotein with a single immunoglobulin-like domain and a cytoplasmic tail containing two immune receptor tyrosine-based inhibitory motifs (PMID: 9285412). LAIR1 is expressed on the majority of human PBMCs, including NK, T, B, monocytes, and dendritic cells, as well as the majority of thymocytes (PMID: 10229813). It functions as an inhibitory receptor that plays a constitutive negative regulatory role on cytolytic function of NK cells, B cells and T cells. LAIR1 is a collagen receptor (PMID: 16754721). Tumor-expressed collagens can modulate immune cell function through the inhibitory collagen receptor LAIR1 (PMID: 21955987).

Storage

Storage:

Store at 2 - 8°C. Stable for one year after shipment.

Storage Buffer:

PBS with 0.09% sodium azide, pH7.3

For technical support and original validation data for this product please contact:

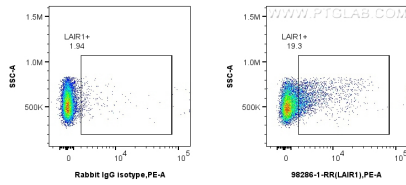
T: 4006900926

E: Proteintech-CN@ptglab.com

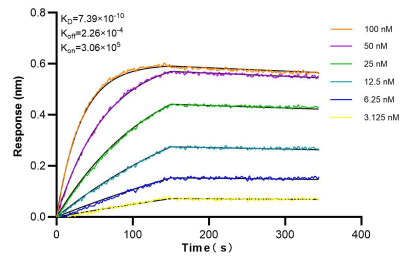
W: ptgcn.com

This product is exclusively available under Proteintech Group brand and is not available to purchase from any other manufacturer.

Selected Validation Data



1x10⁶ mouse splenocytes were surface stained with 0.13 ug Anti-Mouse LAIR1 Rabbit RecAb (98286-1-RR, Clone:242226E10) or 0.13 ug Rabbit IgG Isotype Control RecAb (98136-1-RR, Clone: 240953C9), and PE-Conjugated Goat Anti-Rabbit IgG(H+L). Cells were not fixed.



Biolayer interferometry (BLI) kinetic assays of 98286-1-RR against Mouse LAIR1 were performed. The affinity constant is 0.739 nM.