

For Research Use Only

Anti-Mouse Ly-6G Rabbit Recombinant Antibody, PBS Only

Catalog Number: 98284-1-PBS



Basic Information

Catalog Number:

98284-1-PBS

Size:

1mg, 2 mg/ml

Source:

Rabbit

Isotype:

IgG

GenBank Accession Number:

NM_001310438.1

GeneID (NCBI):

546644

UNIPROT ID:

P35461

Full Name:

lymphocyte antigen 6 complex, locus G

Calculated MW:

14 kDa

Purification Method:

Protein A purification

CloneNo.:

242141B11

Applications

Tested Applications:

FC

Species Specificity:

mouse

Background Information

Ly-6G (lymphocyte antigen 6 complex, locus G), also known as Gr-1, is a 21-25 kDa, glycosylphosphatidylinositol-anchored protein expressed on myeloid lineage cells in mouse bone marrow (PMID: 8360469). The expression of Ly-6G increases on neutrophils as they differentiate from immature cells in the bone marrow to mature cells in the blood and spleen (PMID: 8890901).

Storage

Storage:

Store at -80°C.

The product is shipped with ice packs. Upon receipt, store it immediately at -80°C

Storage Buffer:

PBS Only

For technical support and original validation data for this product please contact:

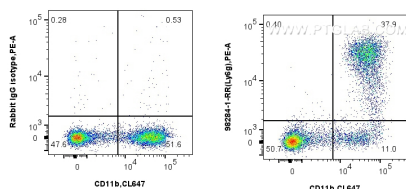
T: 4006900926

E: Proteintech-CN@ptglab.com

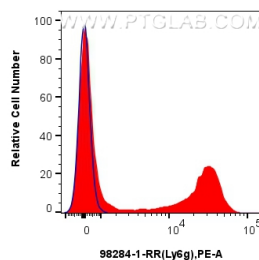
W: ptgcn.com

This product is exclusively available under Proteintech Group brand and is not available to purchase from any other manufacturer.

Selected Validation Data



1x10⁶ mouse bone marrow cells were surface stained with 0.25 ug Anti-Mouse Ly-6G Rabbit RecAb (98284-1-RR, Clone: 242141B11) or 0.25 ug Rabbit IgG Isotype Control RecAb (98136-1-RR, Clone: 240953C9), and PE-Conjugated Goat Anti-Rabbit IgG(H+L). Cells were then stained with CoraLite® Plus 647 Anti-Mouse CD11b (M1/70) (CL647-65055, Clone: M1/70). Cells were not fixed. This data was developed using the same antibody clone with 98284-1-PBS in a different storage buffer



1x10⁶ mouse bone marrow cells were surface stained with 0.25 ug Anti-Mouse Ly-6G Rabbit RecAb (98284-1-RR, Clone:242141B11) (red) or 0.25 ug Rabbit IgG Isotype Control RecAb (98136-1-RR, Clone: 240953C9) (blue), and PE-Conjugated Goat Anti-Rabbit IgG(H+L). Cells were not fixed. This data was developed using the same antibody clone with 98284-1-PBS in a different storage buffer formulation.