

For Research Use Only

# Anti-Human Nectin-2/CD112 Rabbit Recombinant Antibody, PBS Only

Catalog Number: 98283-1-PBS



## Basic Information

Catalog Number:

98283-1-PBS

Concentration:

1mg, 2 mg/ml

Source:

Rabbit

Isotype:

IgG

GenBank Accession Number:

NM\_001042724.2

GeneID (NCBI):

5819

UNIPROT ID:

Q92692-2

Full Name:

poliovirus receptor-related 2  
(herpesvirus entry mediator B)

Calculated MW:

58 kDa

Purification Method:

Protein A purification

CloneNo.:

241725D3

## Applications

Tested Applications:

FC

Species Specificity:

human

## Background Information

Nectin 2, also named as PVRL2, CD112, HVEB, PRR2 and PVRR2, is an adhesion molecule widely expressed in cell lines of different lineages, including hematopoietic, neuronal, endothelial and epithelial cells. CD112 belongs to a new family of immunoglobulin-like molecules that includes four members (CD111, CD112, PRR3 and CD155) sharing an ectodomain made of three Ig domains, of V and C types. CD112 is expressed in the myelo-monocytic and megakaryocytic hematopoietic lineages and the function in hematopoiesis is currently unknown. CD112 is an intercellular homophilic adhesion. CD112 localizes specifically at adherens junctions via its cytoplasmic interaction with the scaffold F-actin binding protein afadin. Disruption of the murine CD112 gene leads to infertility of male mice with morphologically aberrant spermatozoa. CD112 mediates entry of some alphaherpesvirus mutants (also named HveB) via its V domain. CD112 is involved in cell to cell spreading of viruses.

## Storage

Storage:

Store at -80°C.

**The product is shipped with ice packs. Upon receipt, store it immediately at -80°C**

Storage Buffer:

PBS Only

For technical support and original validation data for this product please contact:

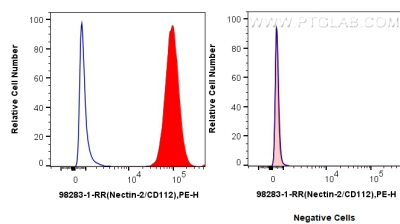
T: 4006900926

E: [Proteintech-CN@ptglab.com](mailto:Proteintech-CN@ptglab.com)

W: [ptgcn.com](http://ptgcn.com)

**This product is exclusively available under Proteintech Group brand and is not available to purchase from any other manufacturer.**

## Selected Validation Data



1x10<sup>6</sup> K562 (left) or Daudi cells (right) were surface stained with 0.25 ug Anti-Human Nectin-2/CD112 Rabbit RecAb (98283-1-RR, Clone: 241725D3) (red) or 0.25 ug Rabbit IgG Isotype Control RecAb (98136-1-RR, Clone: 240953C9) (blue), and PE-Conjugated Goat Anti-Rabbit IgG(H+L). Cells were not fixed. This data was developed using the same antibody clone with 98283-1-PBS in a different storage buffer formulation.