

For Research Use Only

Anti-Human IL-1R1 Rabbit Recombinant Antibody

Catalog Number: 98282-1-RR



Basic Information

Catalog Number: 98282-1-RR	GenBank Accession Number: NM_000877.4	Purification Method: Protein A purification
Size: 100ug, 1000 ug/ml	GeneID (NCBI): 3554	CloneNo.: 242245A10
Source: Rabbit	UNIPROT ID: P14778	
Isotype: IgG	Full Name: interleukin 1 receptor, type I	
	Calculated MW: 65 kDa	

Applications

Tested Applications:
FC

Species Specificity:
human

Background Information

IL-1R1 (IL-1 receptor type 1, also known as p80, IL-1R-alpha or CD121a) is a 80 kDa transmembrane glycoprotein and a member of the interleukin-1 receptor family (PMID: 35163653; 29248002). It is a receptor for IL-1 α , IL-1 β , and interleukin-1 receptor antagonist (IL-1Ra). IL-1 α and IL-1 β interact with the extracellular domain of IL-1R1, triggering the recruitment of an accessory receptor, the IL-1RAcP, resulting in a functional receptor complex that initiates IL-1R1 signaling cascades (PMID: 35163653). IL-1Ra competes with active IL-1 and blocks binding to their common activating receptor IL-1R1 and, thus, inhibits IL-1 signaling (PMID: 35332327; 11641511). It has been reported that IL-1R1 may also bind IL-38 (PMID: 29248002). IL-1R1 expression has been found in many cell types including T cells, macrophages, neutrophils, eosinophils, basophils, mast cells, fibroblasts, and endothelial cells.

Storage

Storage:
Store at 2 - 8°C. Stable for one year after shipment.

Storage Buffer:
PBS with 0.09% sodium azide, pH 7.3.

For technical support and original validation data for this product please contact:

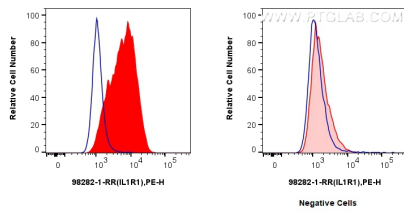
T: 4006900926

E: Proteintech-CN@ptglab.com

W: ptgcn.com

This product is exclusively available under Proteintech Group brand and is not available to purchase from any other manufacturer.

Selected Validation Data



1x10⁶ HeLa cells (left) or SK-OV-3 cells (right) were surface stained with 0.25 ug Anti-Human IL1R1 Rabbit RecAb (98282-1-RR, Clone: 242245A10) (red) or 0.25 ug Rabbit IgG Isotype Control RecAb (98136-1-RR, Clone: 240953C9) (blue), and PE-Conjugated Goat Anti-Rabbit IgG(H+L). Cells were not fixed.