

For Research Use Only

# Anti-Human PSMA/GCPII Rabbit Recombinant Antibody

Catalog Number: 98279-1-RR



## Basic Information

### Catalog Number:

98279-1-RR

### Concentration:

100ug, 1000 µg/ml

### Source:

Rabbit

### Isotype:

IgG

### GenBank Accession Number:

NM\_004476.3

### GeneID (NCBI):

2346

### UNIPROT ID:

Q04609

### Full Name:

folate hydrolase (prostate-specific membrane antigen) 1

### Calculated MW:

84KD

### Purification Method:

Protein A purification

### CloneNo.:

242026E6

## Applications

### Tested Applications:

FC

### Species Specificity:

human

## Background Information

PSMA (Prostate-specific membrane antigen) is also named as FOLH1, FOLH, NAALAD1, PSM and belongs to the peptidase M28 family. PSMA is a 100-120 kDa integral transmembrane glycoprotein, considered to be a highly specific marker of the prostate gland, and has successfully been used as a marker of circulating prostatic epithelial cells (PMID:10074909; 15680901). It is involved in conversion of the major neurotransmitter (NAAG) to NAA and free glutamate. It has 8 isoforms produced by alternative splicing.

## Storage

### Storage:

Store at 2 - 8°C. Stable for one year after shipment.

### Storage Buffer:

PBS with 0.09% sodium azide

For technical support and original validation data for this product please contact:

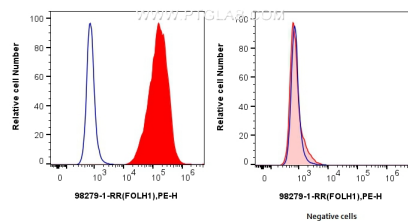
T: 4006900926

E: [Proteintech-CN@ptglab.com](mailto:Proteintech-CN@ptglab.com)

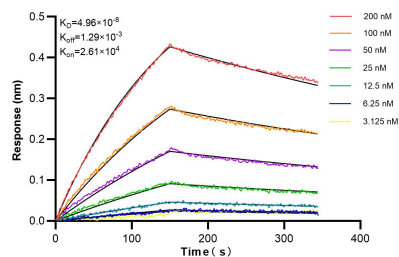
W: [ptgcn.com](http://ptgcn.com)

This product is exclusively available under Proteintech Group brand and is not available to purchase from any other manufacturer.

## Selected Validation Data



1x10<sup>6</sup> LNCaP cells (left) or HeLa (right) were surface stained with 0.25 ug Anti-Human FOLH1 Rabbit RecAb (98279-1-RR, Clone: 242026E6) (red), or Rabbit IgG Isotype Control RecAb (98136-1-RR, Clone: 240953C9) (blue) and PE-Conjugated Goat Anti-Rabbit IgG(H+L). Cells were not fixed.



Biolayer interferometry (BLI) kinetic assays of 98279-1-RR against Human PSMA/GCPII were performed. The affinity constant is 49.6 nM.