

For Research Use Only

# Anti-Mouse Glycophorin A/CD235a Rabbit Recombinant Antibody

Catalog Number: 98269-1-RR



## Basic Information

Catalog Number:

98269-1-RR

Size:

100ug, 1000 ug/ml

Source:

Rabbit

Isotype:

IgG

GenBank Accession Number:

NM\_010369.3

GeneID (NCBI):

14934

UNIPROT ID:

P14220

Full Name:

glycophorin A

Calculated MW:

18kDa

Purification Method:

Protein A purification

CloneNo.:

242129D10

## Applications

Tested Applications:

FC

Species Specificity:

mouse

## Background Information

Glycophorin A (GYPA), also known as CD235a, is the major transmembrane sialoglycoprotein in erythrocytes. It is a dimeric type I transmembrane protein carrying 15 closely clustered O-linked tetrasaccharides capped with sialic acid/N-acetylneuraminic acid (Neu5Ac). This 36 kDa protein represents the major sialoglycoprotein of the red blood cell membrane displaying about one million copies per cell. (PMID: 9490702)

## Storage

Storage:

Store at 2 - 8°C. Stable for one year after shipment.

Storage Buffer:

PBS with 0.09% sodium azide, pH 7.3.

For technical support and original validation data for this product please contact:

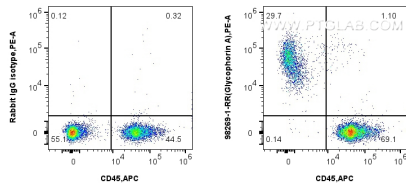
T: 4006900926

E: [Proteintech-CN@ptglab.com](mailto:Proteintech-CN@ptglab.com)

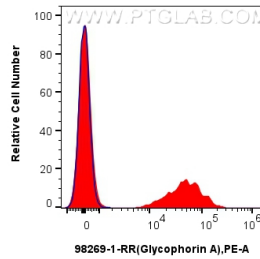
W: [ptgcn.com](http://ptgcn.com)

This product is exclusively available under Proteintech Group brand and is not available to purchase from any other manufacturer.

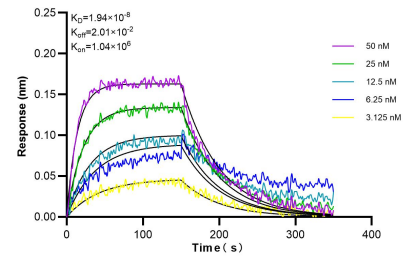
## Selected Validation Data



1x10<sup>6</sup> mouse bone marrow cells were surface stained with 0.25 ug Anti-Mouse Glycophorin A/CD235a Rabbit Recombinant Antibody (98269-1-RR, Clone: 242129D10) or 0.25 ug Rabbit IgG Isotype Control Recombinant Antibody (98136-1-RR, Clone: 240953C9), and PE-Conjugated Goat Anti-Rabbit IgG(H+L). Cells were then stained with APC Anti-Mouse CD45 (30-F11) (APC-65087, Clone: 30-F11). Cells were not fixed.



1x10<sup>6</sup> mouse bone marrow cells were surface stained with 0.25 ug Anti-Mouse Glycophorin A/CD235a Rabbit Recombinant Antibody (98269-1-RR, Clone: 242129D10) (red) or 0.25 ug Rabbit IgG Isotype Control Recombinant Antibody (98136-1-RR, Clone: 240953C9) (blue), and PE-Conjugated Goat Anti-Rabbit IgG(H+L). Cells were not fixed.



Biolayer interferometry (BLI) kinetic assays of 98269-1-RR against Mouse Glycophorin A/CD235a were performed. The affinity constant is 19.4 nM.