

For Research Use Only

Anti-Human CD107a / LAMP1 Rabbit Recombinant Antibody, PBS Only

Catalog Number: 98266-2-PBS



Basic Information

Catalog Number: 98266-2-PBS	GenBank Accession Number: NM_005561.4	Purification Method: Protein A purification
Concentration: 1mg, 2 mg/ml	GeneID (NCBI): 3916	CloneNo.: 242116E8
Source: Rabbit	ENSEMBL Gene ID: ENSG00000185896	
Isotype: IgG	UNIPROT ID: P11279-1	
Immunogen Catalog Number: EG2611	Full Name: lysosomal-associated membrane protein 1	
	Calculated MW: 45 kDa	

Applications

Tested Applications:
IF/ICC, FC (Intra)

Species Specificity:
human

Background Information

LAMP1 (CD107a) is a heavily glycosylated membrane protein enriched in the lysosomal membrane. LAMP1 is extensively glycosylated with asparagine-linked oligosaccharides which protect it from intracellular proteolysis (PMID: 10521503). Although LAMP1 is expressed largely in the endosome-lysosomal membrane of cells, it is also found on the plasma membrane (PMID: 16168398). Elevated LAMP1 expression at the cell surface has also been detected during platelet and granulocytic cell activation, as well as in some tumor cells (PMID: 29085473). LAMP1 functions to provide selectins with carbohydrate ligands. This protein has also been shown to be a marker of degranulation on lymphocytes such as CD8+ and NK cells and may also play a role in tumor cell differentiation and metastasis (PMID: 18835598; 29085473; 9426697).

Storage

Storage:
Store at -80°C.

The product is shipped with ice packs. Upon receipt, store it immediately at -80°C

Storage Buffer:
PBS only, pH7.3

For technical support and original validation data for this product please contact:

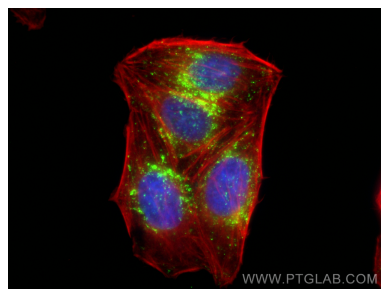
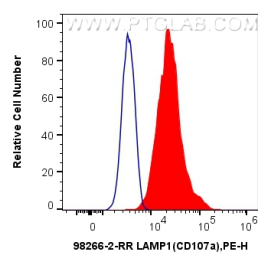
T: 4006900926

E: Proteintech-CN@ptglab.com

W: ptgcn.com

This product is exclusively available under Proteintech Group brand and is not available to purchase from any other manufacturer.

Selected Validation Data



1x10⁶ Jurkat cells were intracellularly stained with 0.25 ug Anti-Human CD107a / LAMP1 Rabbit RecAb (98266-2-RR, Clone: 242116E8) and PE-Conjugated Goat Anti-Rabbit IgG(H+L) (red), or 0.25 ug Rabbit IgG Isotype Control RecAb (98136-1-RR, Clone: 240953C9) and PE-Conjugated Goat Anti-Rabbit IgG(H+L) (blue). Cells were fixed with 4% PFA and permeabilized with Flow Cytometry Perm Buffer (PF00011-C). This data was developed using the same antibody clone.

Immunofluorescent analysis of (4% PFA) fixed HepG2 cells using LAMP1 antibody (98266-2-RR, Clone: 242116E8) at dilution of 1:500 and CoraLite®488-Conjugated Goat Anti-Rabbit IgG(H+L) (SA00013-2), CL594-Phalloidin (red). This data was developed using the same antibody clone with 98266-2-PBS in a different storage buffer formulation.