

For Research Use Only

Anti-Human CXCL10/IP-10 Rabbit Recombinant Antibody

Catalog Number: 98265-4-RR



Basic Information

Catalog Number: 98265-4-RR	GenBank Accession Number: BC010954	Purification Method: Protein A purification
Concentration: 100ug, 1000 µg/ml	GeneID (NCBI): 3627	CloneNo.: 250120D9
Source: Rabbit	UNIPROT ID: P02778	Recommended Dilutions: FC (Intra): 0.25 ug per 10 ⁶ cells in a 100 µl suspension
Isotype: IgG	Full Name: chemokine (C-X-C motif) ligand 10	
Immunogen Catalog Number: EG2489	Calculated MW: 11 kDa	

Applications

Tested Applications: FC (Intra)	Positive Controls: FC (Intra): IFN gamma and Brefeldin A treated human PBMCs,
Species Specificity: human	

Background Information

CXCL10 (also known as IP-10) is a member of the CXC chemokine family which binds to the CXCR3 receptor to exert its biological effects. CXCL10 is a 12-kDa protein and constitutes two internal disulfide cross bridges. The predicted signal peptidase cleavage generates a 10-kDa secreted polypeptide with four conserved cysteine residues in the N-terminal. The CXCL10 gene localizes on chromosome 4 at band q21, a locus associated with an acute monocytic/B-lymphocyte lineage leukemia exhibiting translocation of t(4; 11)(q21; q23). CXCL10 mediates leukocyte trafficking, adaptive immunity, inflammation, haematopoiesis and angiogenesis. Under proinflammatory conditions CXCL10 is secreted from a variety of cells, such as leukocytes, activated neutrophils, eosinophils, monocytes, epithelial cells, endothelial cells, stromal cells (fibroblasts) and keratinocytes in response to IFN- γ .

Storage

Storage:
Store at 2 - 8°C. Stable for one year after shipment.
Storage Buffer:
PBS with 0.09% sodium azide, pH7.3

For technical support and original validation data for this product please contact:

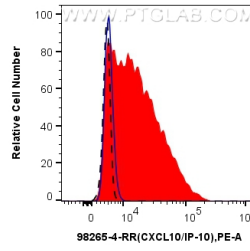
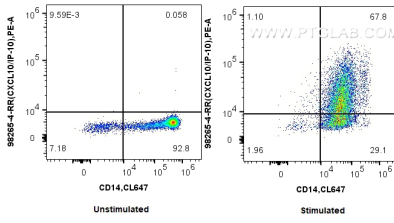
T: 4006900926

E: Proteintech-CN@ptglab.com

W: ptgcn.com

This product is exclusively available under Proteintech Group brand and is not available to purchase from any other manufacturer.

Selected Validation Data



1x10⁶ untreated or IFN gamma and brefeldin A treated human PBMCs were intracellularly stained with 0.25 ug Anti-Human CXCL10/IP-10 Rabbit RecAb (98265-4-RR, Clone:250120D9) and PE-Conjugated Goat Anti-Rabbit IgG(H+L). Cells were then stained with CoraLite® Plus 647 Anti-Human CD14. Cells were fixed with 4% PFA and permeabilized with Flow Cytometry Perm Buffer.

1x10⁶ IFN gamma and Brefeldin A treated human PBMCs were intracellularly stained with 0.25 ug Anti-Human CXCL10/IP-10 Rabbit RecAb (98265-4-RR, Clone:250120D9) (red) or Rabbit IgG Isotype Control RecAb (98136-1-RR, Clone: 240953C9) (blue), and PE-Conjugated Goat Anti-Rabbit IgG(H+L). 1x10⁶ untreated PBMCs were intracellularly stained with 0.25 ug Anti-Human CXCL10/IP-10 Rabbit RecAb (98265-4-RR, Clone: 250120D9) (black, dashed) and PE-Conjugated Goat Anti-Rabbit