

For Research Use Only

# Anti-Human CXCL10/IP-10 Rabbit Recombinant Antibody, PBS Only

Catalog Number: 98265-4-PBS



## Basic Information

<b>Catalog Number:</b> 98265-4-PBS	<b>GenBank Accession Number:</b> BC010954	<b>Purification Method:</b> Protein A purification
<b>Concentration:</b> 1mg, 3 mg/ml	<b>GeneID (NCBI):</b> 3627	<b>CloneNo.:</b> 250120D9
<b>Source:</b> Rabbit	<b>UNIPROT ID:</b> P02778	
<b>Isotype:</b> IgG	<b>Full Name:</b> chemokine (C-X-C motif) ligand 10	
<b>Immunogen Catalog Number:</b> EG2489	<b>Calculated MW:</b> 11 kDa	

## Applications

**Tested Applications:**  
FC (Intra)

**Species Specificity:**  
human

## Background Information

CXCL10 (also known as IP-10) is a member of the CXC chemokine family which binds to the CXCR3 receptor to exert its biological effects. CXCL10 is a 12-kDa protein and constitutes two internal disulfide cross bridges. The predicted signal peptidase cleavage generates a 10-kDa secreted polypeptide with four conserved cysteine residues in the N-terminal. The CXCL10 gene localizes on chromosome 4 at band q21, a locus associated with an acute monocytic/B-lymphocyte lineage leukemia exhibiting translocation of t (4; 11) (q21; q23). CXCL10 mediates leukocyte trafficking, adaptive immunity, inflammation, haematopoiesis and angiogenesis. Under proinflammatory conditions CXCL10 is secreted from a variety of cells, such as leukocytes, activated neutrophils, eosinophils, monocytes, epithelial cells, endothelial cells, stromal cells (fibroblasts) and keratinocytes in response to IFN- $\gamma$ .

## Storage

**Storage:**  
Store at -80°C.  
**The product is shipped with ice packs. Upon receipt, store it immediately at -80°C**

**Storage Buffer:**  
PBS only, pH7.3

For technical support and original validation data for this product please contact:

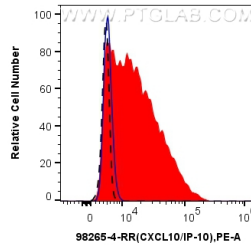
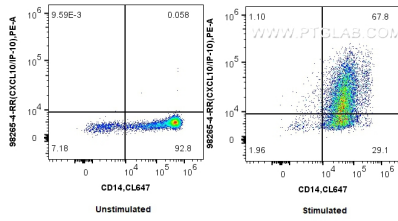
T: 4006900926

E: [Proteintech-CN@ptglab.com](mailto:Proteintech-CN@ptglab.com)

W: [ptgcn.com](http://ptgcn.com)

**This product is exclusively available under Proteintech Group brand and is not available to purchase from any other manufacturer.**

## Selected Validation Data



1x10<sup>6</sup> untreated or IFN gamma and brefeldin A treated human PBMCs were intracellularly stained with 0.25 ug Anti-Human CXCL10/IP-10 Rabbit RecAb (98265-4-RR, Clone:250120D9) and PE-Conjugated Goat Anti-Rabbit IgG(H+L). Cells were then stained with CoraLite® Plus 647 Anti-Human CD14. Cells were fixed with 4% PFA and permeabilized with Flow Cytometry Perm Buffer. This data was developed using the same antibody clone with 98265-4-PBS in a



1x10<sup>6</sup> IFN gamma and Brefeldin A treated human PBMCs were intracellularly stained with 0.25 ug Anti-Human CXCL10/IP-10 Rabbit RecAb (98265-4-RR, Clone:250120D9) (red) or Rabbit IgG Isotype Control RecAb (98136-1-RR, Clone: 240953C9) (blue), and PE-Conjugated Goat Anti-Rabbit IgG(H+L). 1x10<sup>6</sup> untreated PBMCs were intracellularly stained with 0.25 ug Anti-Human CXCL10/IP-10 Rabbit RecAb (98265-4-RR, Clone: 250120D9) (black, dashed) and PE-Conjugated Goat Anti-Rabbit

