

For Research Use Only

# Anti-Human Siglec-9 Rabbit Recombinant Antibody, PBS Only

Catalog Number: 98264-6-PBS



## Basic Information

Catalog Number:

98264-6-PBS

Concentration:

1mg, 2 mg/ml

Source:

Rabbit

Isotype:

IgG

GenBank Accession Number:

NM\_014441.3

GeneID (NCBI):

27180

UNIPROT ID:

Q9Y336-1

Full Name:

sialic acid binding Ig-like lectin 9

Calculated MW:

50 kDa

Purification Method:

Protein A purification

CloneNo.:

241799C10

## Applications

Tested Applications:

FC

Species Specificity:

human

## Background Information

Sialic acid binding Ig-like lectin 9 (Siglec-9), also known as CD329, is a member of the Siglec family of glycan-recognition proteins. Siglec-9 is a type-I transmembrane protein consisting of an N-terminal extracellular region that contains an N-terminal V-set domain and two C2-set domains, a transmembrane region, and an intracellular domain with an immunoreceptor tyrosine-based inhibitory motif (ITIM) and an ITIM-like motif (PMID: 10801862). It is expressed quite broadly among human blood leukocytes, including monocytes, neutrophils, B cells, NK cells, and minor subsets of T cells (PMID: 32322597). Siglec-9 functions as an inhibitory immune checkpoint and can be targeted to enhance therapeutic antitumor immunity (PMID: 34155121; 37460871).

## Storage

Storage:

Store at -80°C.

**The product is shipped with ice packs. Upon receipt, store it immediately at -80°C**

Storage Buffer:

PBS Only

For technical support and original validation data for this product please contact:

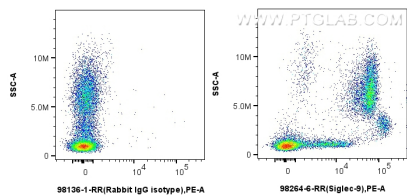
T: 4006900926

E: [Proteintech-CN@ptglab.com](mailto:Proteintech-CN@ptglab.com)

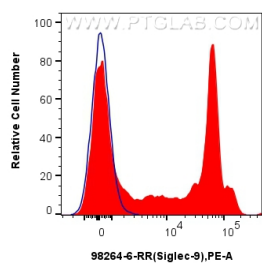
W: [ptgcn.com](http://ptgcn.com)

**This product is exclusively available under Proteintech Group brand and is not available to purchase from any other manufacturer.**

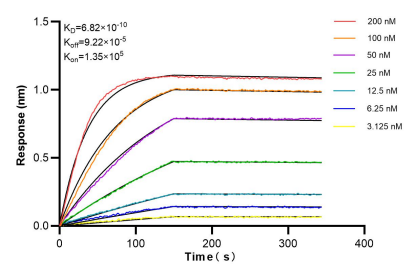
Selected Validation Data



1x10<sup>6</sup> human peripheral blood leukocytes were surface stained with 0.125 ug Anti-Human Siglec-9 Rabbit RecAb (98264-6-RR, Clone: 241799C10) or Rabbit IgG Isotype Control RecAb (98136-1-RR, Clone: 240953C9), and PE-conjugated Goat Anti-Rabbit IgG. Cells were incubated with FC Receptor Block prior to staining. Cells were not fixed. This data was developed using the same antibody clone with 98264-6-PBS in a different storage buffer formulation.



1x10<sup>6</sup> human peripheral blood leukocytes were surface stained with 0.125 ug Anti-Human Siglec-9 Rabbit RecAb (98264-6-RR, Clone: 241799C10) (red) or Rabbit IgG Isotype Control RecAb (98136-1-RR, Clone: 240953C9) (blue), and PE-conjugated Goat Anti-Rabbit IgG. Cells were incubated with FC Receptor Block prior to staining. Cells were not fixed. This data was developed using the same antibody clone with 98264-6-PBS in a different storage buffer formulation.



Biological layer interferometry (BLI) kinetic assays of 98264-6-RR against Human Siglec-9 were performed. The affinity constant is 0.682 nM.