

For Research Use Only

Anti-Rat NKp46/NCR1 Rabbit Recombinant Antibody

Catalog Number: 98250-1-RR



Basic Information

Catalog Number:

98250-1-RR

Size:

100ug, 1000 ug/ml

Source:

Rabbit

Isotype:

IgG

GenBank Accession Number:

NM_057199.1

GeneID (NCBI):

117547

UNIPROT ID:

Q9Z0H5

Full Name:

natural cytotoxicity triggering receptor 1

Calculated MW:

37kDa

Purification Method:

Protein A purification

CloneNo.:

241811E9

Applications

Tested Applications:

FC

Species Specificity:

rat

Background Information

NKp46, also known as NCR1 or CD335, is an Ig-like superfamily cell surface receptor that is highly conserved in mammals (PMID: 22021440). NKp46 is a type I transmembrane glycoprotein consisting of two extracellular Ig-like domains, a transmembrane domain, and an intracellular tail (PMID: 9730896). It is expressed on NK cells, rare T-cell subsets and a mucosal population of NKp46+ innate lymphoid cells (PMID: 9730896; 22021440). NKp46 is the major triggering receptor involved in the natural cytotoxicity (PMID: 10359120; 10092106; 15356098).

Storage

Storage:

Store at 2 - 8°C. Stable for one year after shipment.

Storage Buffer:

PBS with 0.09% sodium azide, pH 7.3.

For technical support and original validation data for this product please contact:

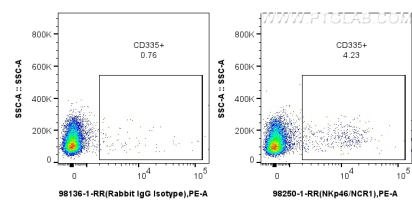
T: 4006900926

E: Proteintech-CN@ptglab.com

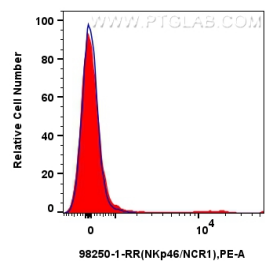
W: ptgcn.com

This product is exclusively available under Proteintech Group brand and is not available to purchase from any other manufacturer.

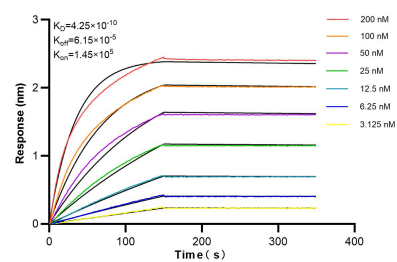
Selected Validation Data



1x10⁶ rat splenocytes were surface stained with 0.25 ug Anti-Rat NKp46/NCR1 Rabbit Recombinant Antibody (98250-1-RR, Clone: 241811E9) or Rabbit IgG Isotype Control Recombinant Antibody (98136-1-RR, Clone: 240953C9), and PE-Conjugated Goat Anti-Rabbit IgG(H+L). Cells were not fixed.



1x10⁶ rat splenocytes were surface stained with 0.25 ug Anti-Rat NKp46/NCR1 Rabbit Recombinant Antibody (98250-1-RR, Clone: 241811E9) (red) or Rabbit IgG Isotype Control Recombinant Antibody (98136-1-RR, Clone: 240953C9) (blue), and PE-Conjugated Goat Anti-Rabbit IgG(H+L). Cells were not fixed.



Biolayer interferometry (BLI) kinetic assays of 98250-1-RR against Rat NKp46/NCR1 were performed. The affinity constant is 0.425 nM.