

For Research Use Only

Anti-Rat KLRB1/CD161 Rabbit Recombinant Antibody

Catalog Number: 98249-1-RR



Basic Information

| | | |
|--------------------------------------|---|---|
| Catalog Number: 98249-1-RR | GenBank Accession Number: NM_001010964.1 | Purification Method: Protein A purification |
| Size: 100ug, 1000 ug/ml | GeneID (NCBI): 362443 | CloneNo.: 241840F3 |
| Source: Rabbit | UNIPROT ID: P27471 | |
| Isotype: IgG | Full Name: killer cell lectin-like receptor subfamily B, member 1A | |
| | Calculated MW: 25 kDa | |

Applications

Tested Applications:
FC

Species Specificity:
rat

Background Information

CD161, also known as KLRB1 or NKR-P1A, is a type II transmembrane C-type lectin-like receptor and is expressed on the cell membrane as disulfide-linked homodimer (PMID: 8077657). It is expressed by the majority of NK cells and subsets of peripheral T cells, including both CD4+ and CD8+ T cells, and is expressed preferentially on adult T cells with a "memory" antigenic phenotype (PMID: 8077657; 22566826). Expression of CD161 correlates with the cytotoxic function of CD16+ NK cells, and ligation of CD161 with its ligand LLT1 inhibits NK cell cytotoxicity and cytokine secretion (PMID: 29686665).

Storage

Storage:
Store at 2 - 8°C. Stable for one year after shipment.

Storage Buffer:
PBS with 0.09% sodium azide, pH 7.3.

For technical support and original validation data for this product please contact:

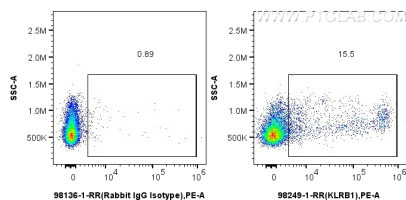
T: 4006900926

E: Proteintech-CN@ptglab.com

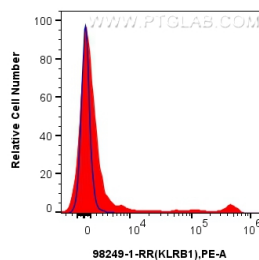
W: ptgcn.com

This product is exclusively available under Proteintech Group brand and is not available to purchase from any other manufacturer.

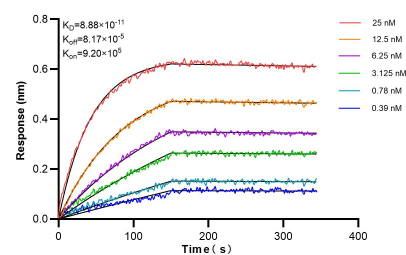
Selected Validation Data



1x10⁶ rat splenocytes were surface stained with 0.25 ug Anti-Rat KLRB1/CD161 Rabbit Recombinant Antibody (98249-1-RR, Clone: 241840F3) or Rabbit IgG Isotype Control Recombinant Antibody (98136-1-RR, Clone: 240953C9), and PE-Conjugated Goat Anti-Rabbit IgG(H+L). Cells were not fixed.



1x10⁶ rat splenocytes were surface stained with 0.25 ug Anti-Rat KLRB1/CD161 Rabbit Recombinant Antibody (98249-1-RR, Clone:241840F3)(red) or Rabbit IgG Isotype Control Recombinant Antibody (98136-1-RR, Clone: 240953C9) (blue) and PE-Conjugated Goat Anti-Rabbit IgG(H+L). Cells were not fixed.



Biolayer interferometry (BLI) kinetic assays of 98249-1-RR against Rat KLRB1/CD161 were performed. The affinity constant is 88.8 pM.