

For Research Use Only

# Anti-Rat KLRB1/CD161 Rabbit Recombinant Antibody, PBS Only

Catalog Number: 98249-1-PBS



## Basic Information

Catalog Number:

98249-1-PBS

Size:

1mg, 2 mg/ml

Source:

Rabbit

Isotype:

IgG

GenBank Accession Number:

NM\_001010964.1

GeneID (NCBI):

362443

UNIPROT ID:

P27471

Full Name:

killer cell lectin-like receptor  
subfamily B, member 1A

Calculated MW:

25 kDa

Purification Method:

Protein A purification

CloneNo.:

241840F3

## Applications

Tested Applications:

FC

Species Specificity:

rat

## Background Information

CD161, also known as KLRB1 or NKR-P1A, is a type II transmembrane C-type lectin-like receptor and is expressed on the cell membrane as disulfide-linked homodimer (PMID: 8077657). It is expressed by the majority of NK cells and subsets of peripheral T cells, including both CD4+ and CD8+ T cells, and is expressed preferentially on adult T cells with a "memory" antigenic phenotype (PMID: 8077657; 22566826). Expression of CD161 correlates with the cytotoxic function of CD16+ NK cells, and ligation of CD161 with its ligand LLT1 inhibits NK cell cytotoxicity and cytokine secretion (PMID: 29686665).

## Storage

Storage:

Store at -80°C.

**The product is shipped with ice packs. Upon receipt, store it immediately at -80°C**

Storage Buffer:

PBS Only

For technical support and original validation data for this product please contact:

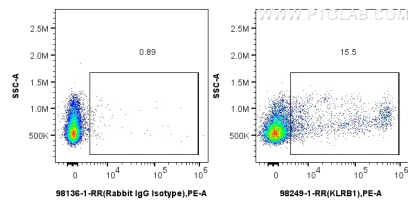
T: 4006900926

E: Proteintech-CN@ptglab.com

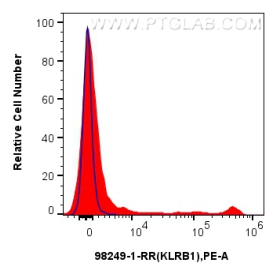
W: ptgcn.com

**This product is exclusively available under Proteintech Group brand and is not available to purchase from any other manufacturer.**

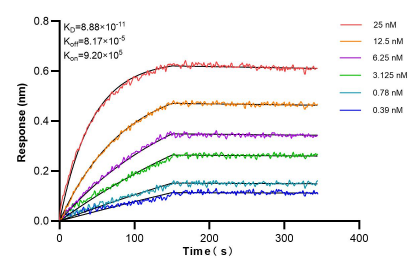
## Selected Validation Data



1x10<sup>6</sup> rat splenocytes were surface stained with 0.25 ug Anti-Rat KLRB1/CD161 Rabbit Recombinant Antibody (98249-1-RR, Clone: 241840F3) or Rabbit IgG Isotype Control Recombinant Antibody (98136-1-RR, Clone: 240953C9), and PE-Conjugated Goat Anti-Rabbit IgG(H+L). Cells were not fixed. This data was developed using the same antibody clone with 98249-1-PBS in a different storage buffer formulation.



1x10<sup>6</sup> rat splenocytes were surface stained with 0.25 ug Anti-Rat KLRB1/CD161 Rabbit Recombinant Antibody (98249-1-RR, Clone:241840F3)(red) or Rabbit IgG Isotype Control Recombinant Antibody (98136-1-RR, Clone: 240953C9) (blue) and PE-Conjugated Goat Anti-Rabbit IgG(H+L). Cells were not fixed. This data was developed using the same antibody clone with 98249-1-PBS in a different storage buffer formulation.



Biolayer interferometry (BLI) kinetic assays of 98249-1-RR against Rat KLRB1/CD161 were performed. The affinity constant is 88.8 pM.