

For Research Use Only

Anti-Mouse BTLA/CD272 Rabbit Recombinant Antibody, PBS Only

Catalog Number: 98246-2-PBS



Basic Information

Catalog Number:

98246-2-PBS

Size:

1mg, 2 mg/ml

Source:

Rabbit

Isotype:

IgG

GenBank Accession Number:

AA108964.1

GeneID (NCBI):

208154

UNIPROT ID:

Q32MV9

Full Name:

B and T Lymphocyte associated

Calculated MW:

34kDa

Purification Method:

Protein A purification

CloneNo.:

242133A1

Applications

Tested Applications:

FC

Species Specificity:

mouse

Background Information

BTLA, also known as CD272, is a member of the CD28 superfamily and is a type I membrane glycoprotein identified as an inhibitory receptor (PMID: 33859648). BTLA is extensively expressed in lymph nodes, thymus, and spleen, with little or no expression in organs such as the heart, kidney, brain, and liver (PMID: 33859648). Among immune cells, BTLA is primarily expressed in B and T cells, with higher expression in B cells compared to T cells in the mouse spleen (PMID: 33859648). BTLA plays a crucial role in regulating stimulatory and inhibitory signals in immune responses.

Storage

Storage:

Store at -80°C.

The product is shipped with ice packs. Upon receipt, store it immediately at -80°C

Storage Buffer:

PBS Only

For technical support and original validation data for this product please contact:

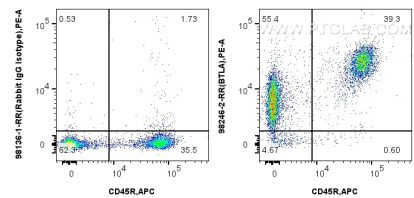
T: 4006900926

E: Proteintech-CN@ptglab.com

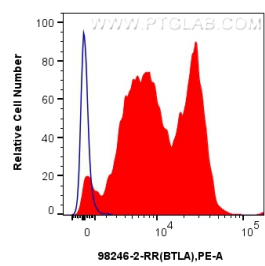
W: ptgcn.com

This product is exclusively available under Proteintech Group brand and is not available to purchase from any other manufacturer.

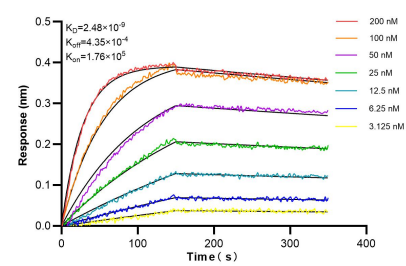
Selected Validation Data



1x10⁶ mouse splenocytes were surface stained with 0.25 ug Anti-Mouse BTLA/CD272 Rabbit Recombinant Antibody (98246-2-RR, Clone: 242133A1) or Rabbit IgG Isotype Control Recombinant Antibody (98136-1-RR, Clone: 240953C9) and PE-Conjugated Goat Anti-Rabbit IgG(H+L). Cells were co-stained with APC Anti-Mouse CD45R (B220) (RA3-6B2) (APC-65139, Clone: RA3-6B2). Cells were not fixed. This data was developed using the same antibody clone with 98246-2-PBS in a



1x10⁶ mouse splenocytes were surface stained with 0.25 ug Anti-Mouse BTLA/CD272 Rabbit Recombinant Antibody (98246-2-RR, Clone: 242133A1)(red) or Rabbit IgG Isotype Control Recombinant Antibody (98136-1-RR, Clone: 240953C9) (blue), and PE-Conjugated Goat Anti-Rabbit IgG(H+L). Cells were not fixed. This data was developed using the same antibody clone with 98246-2-PBS in a different storage buffer formulation.



Biolayer interferometry (BLI) kinetic assays of 98246-2-RR against Mouse BTLA/CD272 were performed. The affinity constant is 0.441 nM.