

For Research Use Only

Anti-Mouse PD-L2/CD273 Rabbit Recombinant Antibody

Catalog Number: 98241-1-RR



Basic Information

| | | |
|--------------------------------------|---|---|
| Catalog Number: 98241-1-RR | GenBank Accession Number: NM_021396.2 | Purification Method: Protein A purification |
| Size: 100ug, 1000 µg/ml | GeneID (NCBI): 58205 | CloneNo.: 241728D8 |
| Source: Rabbit | UNIPROT ID: Q9WUL5 | |
| Isotype: IgG | Full Name: programmed cell death 1 ligand 2 | |
| | Calculated MW: 28kDa | |

Applications

Tested Applications:
FC

Species Specificity:
mouse

Background Information

Programmed cell death ligand 2 (PD-L2, also known as CD273, or B7-DC), is one of the B7 family molecules which are type I transmembrane proteins belonging to the immunoglobulin superfamily. PD-L2 was identified both by its homology to PD-L1 and by analysis of genes differentially expressed in libraries generated from dendritic cells (DC) and activated macrophages (PMID: 14515254). PD-L2 is a second ligand for PD-1, a costimulatory molecule that plays an inhibitory role in regulating T cell activation in the periphery.

Storage

Storage:
Store at 2 - 8°C. Stable for one year after shipment.

Storage Buffer:
PBS with 0.09% sodium azide, pH 7.3.

For technical support and original validation data for this product please contact:

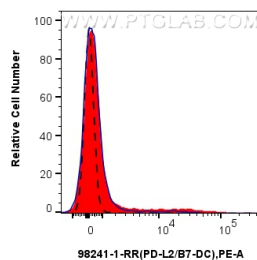
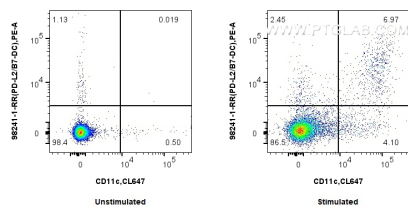
T: 4006900926

E: Proteintech-CN@ptglab.com

W: ptgcn.com

This product is exclusively available under Proteintech Group brand and is not available to purchase from any other manufacturer.

Selected Validation Data



1x10⁶ untreated or GM-CSF treated mouse splenocytes were surface stained with 0.25 ug Anti-Mouse PD-L2/CD273 Rabbit Recombinant Antibody (98241-1-RR, Clone: 241728D8) and PE-Conjugated Goat Anti-Rabbit IgG(H+L). Cells were then stained with APC Anti-Mouse CD11c (N418) (APC-65130, Clone: N418). Cells were not fixed.

1x10⁶ GM-CSF treated mouse splenocytes were surface stained with 0.25 ug Anti-Mouse PD-L2/CD273 Rabbit Recombinant Antibody (98241-1-RR, Clone:241728D8) (red) or Rabbit IgG Isotype Control Recombinant Antibody (98136-1-RR, Clone: 240953C9) (blue) and PE-Conjugated Goat Anti-Rabbit IgG(H+L). 1x10⁶ untreated mouse splenocytes were surface stained with 0.25 ug Anti-Mouse PD-L2/CD273 Rabbit Recombinant Antibody (98241-1-RR, Clone:241728D8) (black, dashed).