

For Research Use Only

Anti-Human CD46 Rabbit Recombinant Antibody, PBS Only

Catalog Number: 98240-1-PBS



Basic Information

Catalog Number:

98240-1-PBS

Concentration:

1mg, 2 mg/ml

Source:

Rabbit

Isotype:

IgG

Immunogen Catalog Number:

EG1770

GenBank Accession Number:

NM_172351.3

GeneID (NCBI):

4179

UNIPROT ID:

P15529-11

Full Name:

CD46 molecule, complement regulatory protein

Calculated MW:

42kDa

Purification Method:

Protein A purification

CloneNo.:

241764C9

Applications

Tested Applications:

FC

Species Specificity:

human

Background Information

CD46, also known as Membrane cofactor protein (MCP) or MIC10, is a ubiquitously expressed type type-I transmembrane glycoprotein that acts as a cofactor for complement factor I to mediate inactivation of C3b and C4b deposited on host cells. CD46 is a receptor for a large number of pathogens, including measles virus and adenovirus (PMID: 20941397). CD46 plays a role in linking innate and adaptive immune responses. It may be involved in the fusion of the spermatozoa with the oocyte during fertilization. Mutations of the CD46 gene have been associated with some diseases including hemolytic uremic syndrome (PMID: 26054645). CD46 is expressed on most cells as four isoforms that are derived via alternative splicing (PMID: 15324743).

Storage

Storage:

Store at -80°C.

The product is shipped with ice packs. Upon receipt, store it immediately at -80°C

Storage Buffer:

PBS only, pH7.3

For technical support and original validation data for this product please contact:

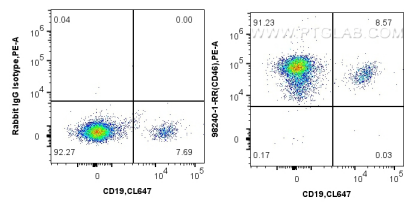
T: 4006900926

E: Proteintech-CN@ptglab.com

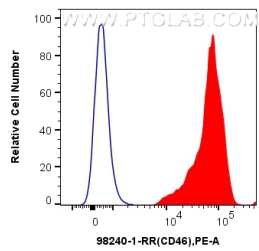
W: ptgcn.com

This product is exclusively available under Proteintech Group brand and is not available to purchase from any other manufacturer.

Selected Validation Data



1x10⁶ human PBMCs were surface stained with 0.125 ug Anti-Human CD46 Rabbit Recombinant Antibody (98240-1-RR, Clone: 241764C9) or Rabbit IgG Isotype Control Recombinant Antibody (98136-1-RR, Clone: 240953C9), and PE-Conjugated Goat Anti-Rabbit IgG(H+L). Cells were then stained with CoraLite® Plus 647 Anti-Human CD19. Cells were incubated with FC Receptor Block prior to staining. Cells were not fixed. This data was developed using the same antibody clone.



1x10⁶ human PBMCs were surface stained with 0.125 ug Anti-Human CD46 Rabbit Recombinant Antibody (98240-1-RR, Clone: 241764C9) (red) or Rabbit IgG Isotype Control Recombinant Antibody (98136-1-RR, Clone: 240953C9) (blue), and PE-Conjugated Goat Anti-Rabbit IgG(H+L). Cells were incubated with FC Receptor Block prior to staining. Cells were not fixed. This data was developed using the same antibody clone with 98240-1-PBS in a different storage buffer formulation.