

For Research Use Only

Anti-Human CD164 Rabbit Recombinant Antibody, PBS Only

Catalog Number: 98239-1-PBS



Basic Information

Catalog Number:

98239-1-PBS

Size:

1mg, 2 mg/ml

Source:

Rabbit

Isotype:

IgG

GenBank Accession Number:

NM_006016.6

GeneID (NCBI):

8763

UNIPROT ID:

Q04900-1

Full Name:

CD164 molecule, sialomucin

Calculated MW:

21kDa

Purification Method:

Protein A purification

CloneNo.:

241950F3

Applications

Tested Applications:

FC

Species Specificity:

human

Background Information

Sialomucins are a heterogeneous group of secreted or membrane-associated mucins that appear to play 2 key but opposing roles in vivo: first as cytoprotective or antiadhesive agents, and second as adhesion receptors. CD164 is a type I integral transmembrane sialomucin that functions as an adhesion receptor (PMID: 9680353)(PMID: 17077324). Sialomucin CD164 (MUC-24), also referred to multi-glycosylated core protein 24 (MGC24), is known to function as a receptor that regulates stem cell localization to the bone marrow. CD164 may play a key role in hematopoiesis by facilitating the adhesion of CD34+ cells to the stroma and by negatively regulating CD34+CD38(lo/-) cell proliferation. Important role of CD164 in in prostate cancer metastasis, promoting myogenesis and regulating myoblast migration so far have been revealed (PMID: 9763543)(PMID: 16859559)(PMID: 17077324).

Storage

Storage:

Store at -80°C.

The product is shipped with ice packs. Upon receipt, store it immediately at -80°C

Storage Buffer:

PBS Only

For technical support and original validation data for this product please contact:

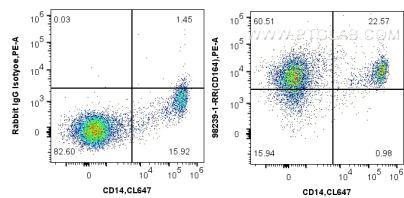
T: 4006900926

E: Proteintech-CN@ptglab.com

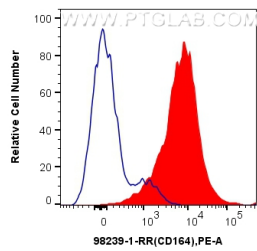
W: ptgcn.com

This product is exclusively available under Proteintech Group brand and is not available to purchase from any other manufacturer.

Selected Validation Data



1x10⁶ human PBMCs were surface stained with 0.25 ug Anti-Human CD164 Rabbit Recombinant Antibody (98239-1-RR, Clone: 241950F3) or Rabbit IgG Isotype Control Recombinant Antibody (98136-1-RR, Clone: 240953C9) and PE-Conjugated Goat Anti-Rabbit IgG(H+L). Cells were then stained with and 0.25 ug CoraLite® Plus 647 Anti-Human CD14. Cells were incubated with FC Receptor Block prior to staining. Cells were not fixed. This data was developed using the same



1x10⁶ human PBMCs were surface stained with 0.25 ug Anti-Human CD164 Rabbit Recombinant Antibody (98239-1-RR, Clone:241950F3) (red), or Rabbit IgG Isotype Control Recombinant Antibody (98136-1-RR, Clone: 240953C9) (blue) and PE-Conjugated Goat Anti-Rabbit IgG(H+L). Cells were incubated with FC Receptor Block prior to staining. Cells were not fixed. This data was developed using the same antibody clone with 98239-1-PBS in a different storage buffer