

For Research Use Only

Anti-Human LILRB3/CD85a Rabbit Recombinant Antibody

Catalog Number: 98237-1-RR



Basic Information

Catalog Number:

98237-1-RR

Concentration:

100ug, 1000 µg/ml

Source:

Rabbit

Isotype:

IgG

GenBank Accession Number:

BC112198

GeneID (NCBI):

11025

UNIPROT ID:

O75022

Full Name:

leukocyte immunoglobulin-like receptor, subfamily B (with TM and ITIM domains), member 3

Calculated MW:

631 aa, 69 kDa

Purification Method:

Protein A purification

CloneNo.:

241894C10

Recommended Dilutions:

FC: 0.25 ug per 10⁶ cells in 100 µl suspension

Applications

Tested Applications:

FC

Species Specificity:

human

Positive Controls:

FC : human PBMCs,

Background Information

The leukocyte immunoglobulin-like receptors (LIRs, also known as ILTs, CD85, and LILRs) comprise a family of related immunoregulatory receptors encoded within the leukocyte receptor cluster (LRC) at chromosomal region 19q13.4 (PMID: 11491530). LIRs are transmembrane proteins containing either two or four extracellular immunoglobulin domains, and have diverse functions, including the regulation of inflammation, immune tolerance, cell differentiation and nervous system plasticity (PMID: 16406677; 26040207). LILRB3, also known as ILT-5 or CD85a, belongs to the subfamily B class of LIR receptors which contain two or four extracellular immunoglobulin domains, a transmembrane domain, and two to four cytoplasmic immunoreceptor tyrosine-based inhibitory motifs (ITIMs). LILRB3 is found on the surface of a variety of cell types including monocytes/macrophages, granulocytes, NK cells and some T cells. It binds to MHC class I molecules and transduces a negative signal that inhibits stimulation of an immune response. LILRB3 has been reported as a myeloid cell checkpoint that elicits profound immunomodulation (PMID: 32870822).

Storage

Storage:

Store at 2 - 8°C. Stable for one year after shipment.

Storage Buffer:

PBS with 0.09% sodium azide, pH7.3

For technical support and original validation data for this product please contact:

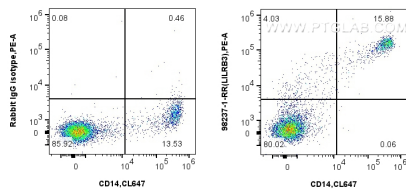
T: 4006900926

E: Proteintech-CN@ptglab.com

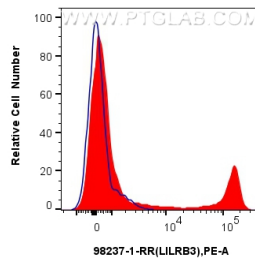
W: ptgcn.com

This product is exclusively available under Proteintech Group brand and is not available to purchase from any other manufacturer.

Selected Validation Data



1x10⁶ human PBMCs were surface stained with 0.25 ug Anti-Human LILRB3/CD85a Rabbit Recombinant Antibody (98237-1-RR, Clone: 241894C10) or 0.25 ug Rabbit IgG Isotype Control Recombinant Antibody (98136-1-RR, Clone: 240953C9), and PE-Conjugated Goat Anti-Rabbit IgG(H+L). Cells were co-stained with CoraLite® Plus 647 Anti-Human CD14. Cells were incubated with FC Receptor Block prior to staining. Cells were not fixed.



1x10⁶ human PBMCs were surface stained with 0.25 ug Anti-Human LILRB3/CD85a Rabbit Recombinant Antibody (98237-1-RR, Clone: 241894C10)(red) or 0.25 ug Rabbit IgG Isotype Control Recombinant Antibody (98136-1-RR, Clone: 240953C9) (blue), and PE-Conjugated Goat Anti-Rabbit IgG(H+L). Cells were incubated with FC Receptor Block prior to staining. Cells were not fixed.