

For Research Use Only

Anti-Human CD300e Rabbit Recombinant Antibody, PBS Only

Catalog Number: 98235-1-PBS



Basic Information

Catalog Number:

98235-1-PBS

Concentration:

1mg, 2 mg/ml

Source:

Rabbit

Isotype:

IgG

GenBank Accession Number:

NM_181449.2

GeneID (NCBI):

342510

UNIPROT ID:

Q496F6

Full Name:

CD300e molecule

Calculated MW:

23 kDa

Purification Method:

Protein A purification

CloneNo.:

242031C10

Applications

Tested Applications:

FC

Species Specificity:

human

Background Information

CD300e, also known as immune receptor expressed on myeloid cells 2 (IREM-2), CLM-2, or CMRF35-A5, is one of the CD300 family members which belong to the immunoglobulin (Ig) superfamily (PMID: 15557162; 20039296). CD300e is a type I transmembrane glycoprotein that contains an extracellular region comprising an Ig-like domain, a transmembrane region, and a short cytoplasmic tail (PMID: 15557162; 29358324). It is by monocytes and myeloid dendritic cells and transmits an immune-activating signal by interacting with DNAX-activating protein 12 (DAP12) (PMID: 29358324).

Storage

Storage:

Store at -80°C.

The product is shipped with ice packs. Upon receipt, store it immediately at -80°C

Storage Buffer:

PBS Only

For technical support and original validation data for this product please contact:

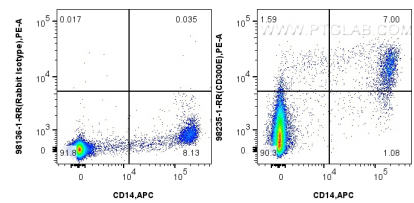
T: 4006900926

E: Proteintech-CN@ptglab.com

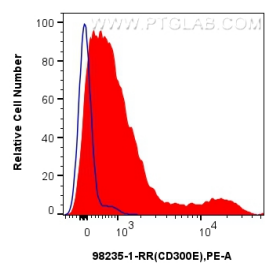
W: ptgcn.com

This product is exclusively available under Proteintech Group brand and is not available to purchase from any other manufacturer.

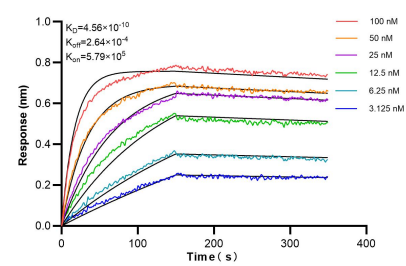
Selected Validation Data



1x10⁶ human PBMCs were surface stained with 0.25 ug Anti-Human CD300e Rabbit Recombinant Antibody (98235-1-RR, Clone: 242031C10) or Rabbit IgG Isotype Control Recombinant Antibody (98136-1-RR, Clone: 240953C9) and PE-Conjugated Goat Anti-Rabbit IgG. Cells were co-stained with APC Anti-Human CD14. Cells were incubated with FC Receptor Block prior to staining. Cells were not fixed This data was developed using the same antibody clone with 98235-1-PBS in a



1x10⁶ human PBMCs were surface stained with 0.25 ug Anti-Human CD300e Rabbit Recombinant Antibody (98235-1-RR, Clone: 242031C10) (red) or Rabbit IgG Isotype Control Recombinant Antibody (98136-1-RR, Clone: 240953C9) (blue), and PE-Conjugated Goat Anti-Rabbit IgG(H+L). Cells were not fixed. This data was developed using the same antibody clone with 98235-1-PBS in a different storage buffer formulation.



Biolayer interferometry (BLI) kinetic assays of 98235-1-RR against Human CD300e were performed. The affinity constant is 0.456 nM.