

For Research Use Only

# Anti-Human SLAM/CD150 Rabbit Recombinant Antibody, PBS Only

Catalog Number: 98220-1-PBS



## Basic Information

Catalog Number:

98220-1-PBS

Concentration:

1mg, 2 mg/ml

Source:

Rabbit

Isotype:

IgG

GenBank Accession Number:

NM\_003037.5

GeneID (NCBI):

6504

UNIPROT ID:

Q13291-1

Full Name:

signaling lymphocytic activation molecule family member 1

Calculated MW:

37kDa

Purification Method:

Protein A purification

CloneNo.:

241800B12

## Applications

Tested Applications:

FC

Species Specificity:

human

## Background Information

Signaling lymphocytic activation molecule (SLAM, also known as SLAMF1 or CD150) is a 70-95 kDa transmembrane glycoprotein that belongs to the immunoglobulin gene superfamily. SLAM is constitutively expressed on peripheral blood memory T-cells, T-cell clones, immature thymocytes and a proportion of B-cells, and is rapidly induced on naive T-cells after activation. SLAM is involved in T cell stimulation and cytokine production, and may play an important role in the regulation of immune responses to pathogens.

## Storage

Storage:

Store at -80°C.

**The product is shipped with ice packs. Upon receipt, store it immediately at -80°C**

Storage Buffer:

PBS Only

For technical support and original validation data for this product please contact:

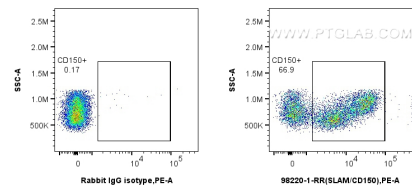
T: 4006900926

E: [Proteintech-CN@ptglab.com](mailto:Proteintech-CN@ptglab.com)

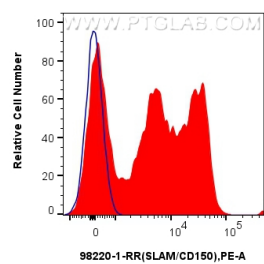
W: [ptgcn.com](http://ptgcn.com)

**This product is exclusively available under Proteintech Group brand and is not available to purchase from any other manufacturer.**

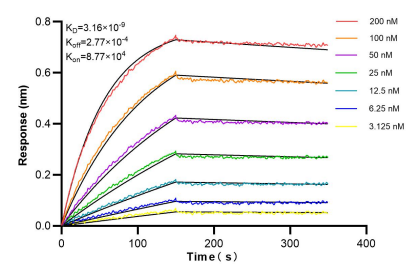
Selected Validation Data



1x10<sup>6</sup> human PBMCs were surface stained with 0.25 ug Anti-Human SLAM/CD150 Rabbit Recombinant Antibody (98220-1-RR, Clone: 241800B12) or Rabbit IgG Isotype Control Recombinant Antibody (98136-1-RR, Clone: 240953C9), and PE-Conjugated Goat Anti-Rabbit IgG(H+L). Cells were not fixed. Lymphocytes were gated. This data was developed using the same antibody clone with 98220-1-PBS in a different storage buffer formulation.



1x10<sup>6</sup> human PBMCs were surface stained with 0.25 ug Anti-Human SLAM/CD150 Rabbit Recombinant Antibody (98220-1-RR, Clone: 241800B12) (red) or Rabbit IgG Isotype Control Recombinant Antibody (98136-1-RR, Clone: 240953C9) (blue), and PE-Conjugated Goat Anti-Rabbit IgG(H+L). Cells were not fixed. Lymphocytes were gated. This data was developed using the same antibody clone with 98220-1-PBS in a different storage buffer formulation.



Biolayer interferometry (BLI) kinetic assays of 98220-1-RR against Human SLAM/CD150 were performed. The affinity constant is 3.16 nM.