

For Research Use Only

# Anti-Mouse NKp46/NCR1 Rabbit Recombinant Antibody

Catalog Number: 98198-1-RR



## Basic Information

Catalog Number:

98198-1-RR

Concentration:

100ug, 1000 ug/ml

Source:

Rabbit

Isotype:

IgG

GenBank Accession Number:

NM\_010746.3

GeneID (NCBI):

17086

UNIPROT ID:

Q8C567

Full Name:

natural cytotoxicity triggering  
receptor 1

Calculated MW:

37kDa

Purification Method:

Protein A purification

CloneNo.:

241804A12

## Applications

Tested Applications:

FC

Species Specificity:

mouse

## Background Information

NKp46, also known as NCR1 or CD335, is an Ig-like superfamily cell surface receptor that is highly conserved in mammals (PMID: 22021440). NKp46 is a type I transmembrane glycoprotein consisting of two extracellular Ig-like domains, a transmembrane domain, and an intracellular tail (PMID: 9730896). It is expressed on NK cells, rare T-cell subsets and a mucosal population of NKp46+ innate lymphoid cells (PMID: 9730896; 22021440). NKp46 is the major triggering receptor involved in the natural cytotoxicity (PMID: 10359120; 10092106; 15356098).

## Storage

Storage:

Store at 2 - 8°C. Stable for one year after shipment.

Storage Buffer:

PBS with 0.09% sodium azide, pH 7.3.

For technical support and original validation data for this product please contact:

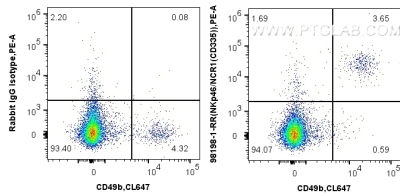
T: 4006900926

E: [Proteintech-CN@ptglab.com](mailto:Proteintech-CN@ptglab.com)

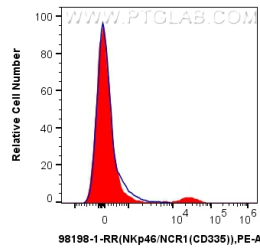
W: [ptgcn.com](http://ptgcn.com)

This product is exclusively available under Proteintech Group brand and is not available to purchase from any other manufacturer.

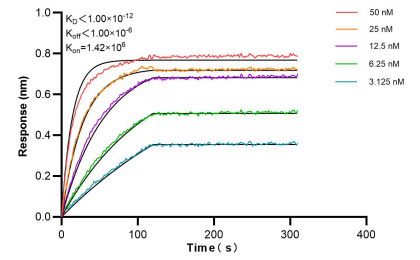
## Selected Validation Data



1x10<sup>6</sup> mouse splenocytes were surface stained with 0.25 ug Anti-Mouse NKp46/NCR1 Rabbit Recombinant Antibody (98198-1-RR, Clone: 241804A12) or Rabbit IgG Isotype Control Recombinant Antibody (98136-1-RR, Clone: 240953C9), and PE-Conjugated Goat Anti-Rabbit IgG(H+L). Cells were co-stained with CoraLite® Plus 647 Anti-Mouse CD49b. Cells were not fixed.



1x10<sup>6</sup> mouse splenocytes were surface stained with 0.25 ug Anti-Mouse NKp46/NCR1 Rabbit Recombinant Antibody (98198-1-RR, Clone: 241804A12)(red) or Rabbit IgG Isotype Control Recombinant Antibody (98136-1-RR, Clone: 240953C9) (blue), and PE-Conjugated Goat Anti-Rabbit IgG(H+L). Cells were not fixed.



Biolayer interferometry (BLI) kinetic assays of 98198-1-RR against Mouse NKp46/NCR1 were performed. The affinity constant is below 1 pM.