

For Research Use Only

Anti-Mouse NKp46/NCR1 Rabbit Recombinant Antibody, PBS Only

Catalog Number: 98198-1-PBS



Basic Information

Catalog Number:

98198-1-PBS

Concentration:

1mg, 2 mg/ml

Source:

Rabbit

Isotype:

IgG

GenBank Accession Number:

NM_010746.3

GeneID (NCBI):

17086

UNIPROT ID:

Q8C567

Full Name:

natural cytotoxicity triggering receptor 1

Calculated MW:

37kDa

Purification Method:

Protein A purification

CloneNo.:

241804A12

Applications

Tested Applications:

FC

Species Specificity:

mouse

Background Information

NKp46, also known as NCR1 or CD335, is an Ig-like superfamily cell surface receptor that is highly conserved in mammals (PMID: 22021440). NKp46 is a type I transmembrane glycoprotein consisting of two extracellular Ig-like domains, a transmembrane domain, and an intracellular tail (PMID: 9730896). It is expressed on NK cells, rare T-cell subsets and a mucosal population of NKp46+ innate lymphoid cells (PMID: 9730896; 22021440). NKp46 is the major triggering receptor involved in the natural cytotoxicity (PMID: 10359120; 10092106; 15356098).

Storage

Storage:

Store at -80°C.

The product is shipped with ice packs. Upon receipt, store it immediately at -80°C

Storage Buffer:

PBS Only

For technical support and original validation data for this product please contact:

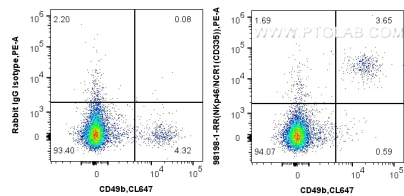
T: 4006900926

E: Proteintech-CN@ptglab.com

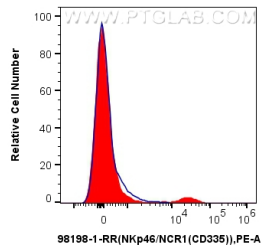
W: ptgcn.com

This product is exclusively available under Proteintech Group brand and is not available to purchase from any other manufacturer.

Selected Validation Data



1x10⁶ mouse splenocytes were surface stained with 0.25 ug Anti-Mouse NKp46/NCR1 Rabbit Recombinant Antibody (98198-1-RR, Clone: 241804A12) or Rabbit IgG Isotype Control Recombinant Antibody (98136-1-RR, Clone: 240953C9), and PE-Conjugated Goat Anti-Rabbit IgG(H+L). Cells were co-stained with CoraLite® Plus 647 Anti-Mouse CD49b. Cells were not fixed. This data was developed using the same antibody clone with 98198-1-PBS in a different storage buffer formulation.



1x10⁶ mouse splenocytes were surface stained with 0.25 ug Anti-Mouse NKp46/NCR1 Rabbit Recombinant Antibody (98198-1-RR, Clone: 241804A12)(red) or Rabbit IgG Isotype Control Recombinant Antibody (98136-1-RR, Clone: 240953C9) (blue), and PE-Conjugated Goat Anti-Rabbit IgG(H+L). Cells were not fixed. This data was developed using the same antibody clone with 98198-1-PBS in a different storage buffer formulation.

