

For Research Use Only

# Anti-Mouse CD45.2 Rabbit Recombinant Antibody, PBS Only

Catalog Number: 98168-1-PBS



## Basic Information

Catalog Number:

98168-1-PBS

Concentration:

1mg, 2 mg/ml

Source:

Rabbit

Isotype:

IgG

GenBank Accession Number:

GeneID (NCBI):

19264

Full Name:

protein tyrosine phosphatase,  
receptor type, C

Purification Method:

Protein A purification

CloneNo.:

240922E12

## Applications

Tested Applications:

FC

Species Specificity:

mouse

## Background Information

CD45, also known as protein tyrosine phosphatase, receptor type C, is a type I transmembrane protein expressed on the surface of all haematopoietic cells with the exception of erythrocytes and platelets (PMID: 3489673; 28615666). CD45 is a pan-haematopoietic cell marker and has been shown to be essential for T- and B-cell activation and signalling (PMID: 9429890; 16378097). Allelic variants of mouse CD45, CD45.1 (Ly5.1) and CD45.2 (Ly5.1), have been established as a marker system to track haematopoietic cells following congenic mouse bone marrow transplants (PMID: 28615666). CD45.2 is the common form and is expressed by most of the established strains, while CD45.1 is found in only a few like the SJL mouse strain (PMID: 3489673).

## Storage

Storage:

Store at -80°C.

**The product is shipped with ice packs. Upon receipt, store it immediately at -80°C**

Storage Buffer:

PBS only, pH7.3

For technical support and original validation data for this product please contact:

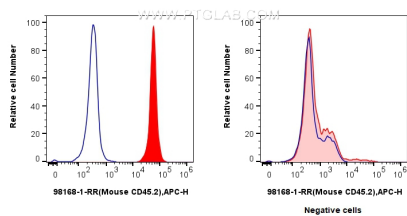
T: 4006900926

E: [Proteintech-CN@ptglab.com](mailto:Proteintech-CN@ptglab.com)

W: [ptgcn.com](http://ptgcn.com)

**This product is exclusively available under Proteintech Group brand and is not available to purchase from any other manufacturer.**

## Selected Validation Data



1x10<sup>6</sup> C57BL/6 mouse splenocytes (left) or SJL mouse splenocytes (right) were surface stained with 0.25 ug Anti-Mouse Mouse CD45.2 Rabbit Recombinant Antibody (98168-1-RR, Clone: 240922E12)(red), or Isotype Control (blue) and APC-Conjugated Goat Anti-Rabbit IgG(H+L). Cells were not fixed. This data was developed using the same antibody clone with 98168-1-PBS in a different storage buffer formulation.