

For Research Use Only

# Anti-Mouse PD-L1/B7-H1 Rabbit Recombinant Antibody, PBS Only

Catalog Number: 98166-4-PBS



## Basic Information

Catalog Number:

98166-4-PBS

Concentration:

1mg, 2 mg/ml

Source:

Rabbit

Isotype:

IgG

GenBank Accession Number:

NM\_021893.3

GeneID (NCBI):

60533

UNIPROT ID:

Q9EP73

Full Name:

CD274 antigen

Calculated MW:

33 kDa

Purification Method:

Protein A purification

CloneNo.:

242265E6

## Applications

Tested Applications:

FC

Species Specificity:

mouse

## Background Information

Programmed cell death ligand 1 (PD-L1, CD274, or B7-H1), is the first member of B7 family to be discovered. B7 family molecules are type I transmembrane proteins belonging to the immunoglobulin superfamily. In concert with their CD28 family receptors, the B7s are key regulators of the adaptive immune response. PD-L1 is suggested as a negative regulator of T and B cell, and plays important role in mediating tolerance of lymphocytes to self-antigens. It is also involved in the costimulatory signal, essential for T-cell proliferation and production of IL10 and IFNG, in an IL2-dependent and a PD-1-independent manner.

## Storage

Storage:

Store at -80°C.

The product is shipped with ice packs. Upon receipt, store it immediately at -80°C

Storage Buffer:

PBS only, pH7.3

For technical support and original validation data for this product please contact:

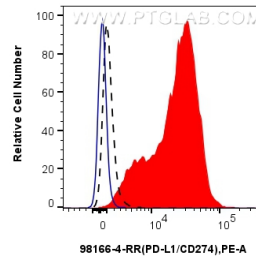
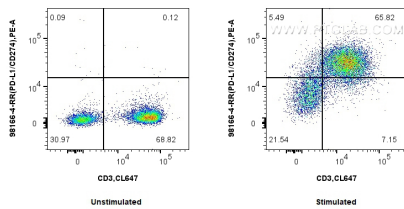
T: 4006900926

E: [Proteintech-CN@ptglab.com](mailto:Proteintech-CN@ptglab.com)

W: [ptgcn.com](http://ptgcn.com)

This product is exclusively available under Proteintech Group brand and is not available to purchase from any other manufacturer.

## Selected Validation Data



$1 \times 10^6$  untreated or anti-CD3/CD28 treated mouse splenocytes were surface stained with 0.25  $\mu$ g Anti-Mouse PD-L1/B7-H1 Rabbit RecAb (98166-4-RR, Clone:242265E6) and PE-Conjugated Goat Anti-Rabbit IgG(H+L). Cells were co-stained with CoraLite® Plus 647 Anti-Mouse CD3 (17A2) (CL647-65077, Clone: 17A2). Cells were not fixed. This data was developed using the same antibody clone with 98166-4-PBS in a different storage buffer formulation.

$1 \times 10^6$  anti-CD3/CD28 treated mouse splenocytes were surface stained with 0.25  $\mu$ g Anti-Mouse PD-L1/B7-H1 Rabbit RecAb (98166-4-RR, Clone: 242265E6) (red) or 0.25  $\mu$ g Rabbit IgG Isotype Control RecAb (98136-1-RR, Clone: 240953C9) (blue), and PE-Conjugated Goat Anti-Rabbit IgG(H+L).  $1 \times 10^6$  untreated mouse splenocytes were surface stained with 0.25  $\mu$ g Anti-Mouse PD-L1/B7-H1 Rabbit RecAb (98166-4-RR, Clone: 242265E6) (black, dashed) and PE-Conjugated Goat Anti-Rabbit