

For Research Use Only

# Anti-Mouse CD6 Rabbit Recombinant Antibody, PBS Only

Catalog Number: 98161-1-PBS



## Basic Information

Catalog Number: 98161-1-PBS	GenBank Accession Number: NM_009852.3	Purification Method: Protein A purification
Concentration: 1mg, 2 mg/ml	GeneID (NCBI): 12511	CloneNo.: 241471F3
Source: Rabbit	UNIPROT ID: Q61003-1	
Isotype: IgG	Full Name: CD6 antigen	
Immunogen Catalog Number: EG1401	Calculated MW: 72kDa	

## Applications

Tested Applications:  
FC

Species Specificity:  
mouse

## Background Information

CD6 is a type I transmembrane glycoprotein that belongs to the scavenger receptor cysteine-rich superfamily (PMID: 21880988). It is composed of an extracellular region, which consists of three tandem SRCR domains, a transmembrane region, and a cytoplasmic tail devoid of intrinsic catalytic activity but harboring several phosphorylatable residues suitable for intracellular signal transduction (PMID: 38139340; 23711376). CD6 is expressed by T cells, medullary thymocytes, a subset of B cells and NK cells, and in some cells of the brain (PMID: 1919444; 21178331). CD6 plays a role in lymphocyte activation, proliferation, and survival processes via interaction with its endogenous ligands.

## Storage

Storage:  
Store at -80°C.  
**The product is shipped with ice packs. Upon receipt, store it immediately at -80°C**

Storage Buffer:  
PBS only, pH7.3

For technical support and original validation data for this product please contact:

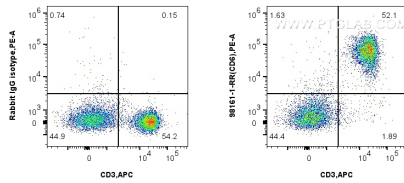
T: 4006900926

E: Proteintech-CN@ptglab.com

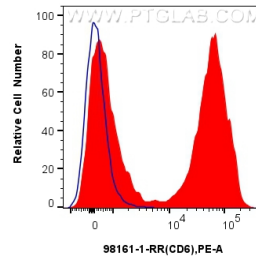
W: ptgcn.com

**This product is exclusively available under Proteintech Group brand and is not available to purchase from any other manufacturer.**

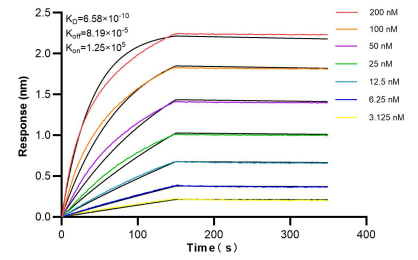
## Selected Validation Data



1x10<sup>6</sup> BALB/c mouse splenocytes were surface stained with 0.25 ug Anti-Mouse CD6 Rabbit Recombinant Antibody (98161-1-RR, Clone:241471F3) or 0.25 ug Isotype Control, and PE-Conjugated Goat Anti-Rabbit IgG(H+L). Cells were co-stained with APC Anti-Human CD3. Cells were not fixed. This data was developed using the same antibody clone with 98161-1-PBS in a different storage buffer formulation.



1x10<sup>6</sup> BALB/c mouse splenocytes were surface stained with 0.25 ug Anti-Mouse CD6 Rabbit Recombinant Antibody (98161-1-RR, Clone:241471F3) (red) or 0.25 ug Isotype Control (blue), and PE-Conjugated Goat Anti-Rabbit IgG(H+L). Cells were not fixed. This data was developed using the same antibody clone with 98161-1-PBS in a different storage buffer formulation.



Biolayer interferometry (BLI) kinetic assays of 98161-1-RR against Mouse CD6 were performed. The affinity constant is 0.658 nM.