

For Research Use Only

Anti-Human CRTAM/CD355 Rabbit Recombinant Antibody

Catalog Number: 98157-1-RR



Basic Information

Catalog Number: 98157-1-RR	GenBank Accession Number: NM_019604.4	Purification Method: Protein A purification
Size: 100ug, 1000 ug/ml	GeneID (NCBI): 56253	CloneNo.: 241280B12
Source: Rabbit	UNIPROT ID: O95727-1	
Isotype: IgG	Full Name: cytotoxic and regulatory T cell molecule	
	Calculated MW: 45 kDa	

Applications

Tested Applications:
FC

Species Specificity:
human

Background Information

Cytotoxic and regulatory T cell molecule (CRTAM, also known as CD355) is an immunoglobulin-superfamily transmembrane protein with V and C1-like Ig domains, which is involved in epithelial cell adhesion (PMID: 18329370; 20556794). CRTAM is critical to instruct the differentiation of CD4+ cytotoxic T cells (CTL) through the induction of eomesodermin and CTL-related genes (PMID: 26694968). It also regulates CD8+ T cell retention within the lymph node and eventually effector function (PMID: 19752223).

Storage

Storage:
Store at 2 - 8°C. Stable for one year after shipment.

Storage Buffer:
PBS with 0.09% sodium azide, pH 7.3.

For technical support and original validation data for this product please contact:

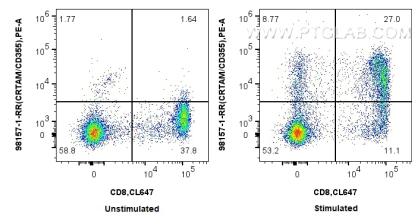
T: 4006900926

E: Proteintech-CN@ptglab.com

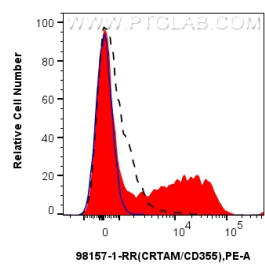
W: ptgcn.com

This product is exclusively available under Proteintech Group brand and is not available to purchase from any other manufacturer.

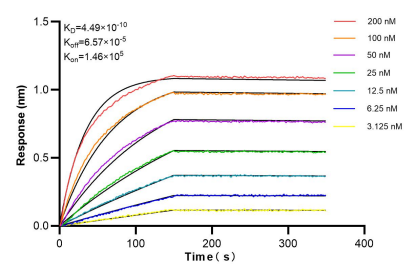
Selected Validation Data



1x10⁶ untreated or PMA and ionomycin treated human PBMCs were surface stained with 0.25 ug Anti-Human CRTAM/CD355 Rabbit Recombinant Antibody (98157-1-RR, Clone: 241280B12) and PE-conjugated Goat Anti-Rabbit IgG. Cells were co-stained with CoraLite® Plus 647 Anti-Human CD8. Cells were not fixed.



1x10⁶ PMA and ionomycin treated human PBMCs were surface stained with 0.25 ug Anti-Human CRTAM/CD355 Rabbit Recombinant Antibody (98157-1-RR, Clone: 241280B12) (red) or Rabbit IgG Isotype Control Recombinant Antibody (98136-1-RR, Clone: 240953C9) (blue), and PE-conjugated Goat Anti-Rabbit IgG. 1x10⁶ untreated human PBMCs were surface stained with 0.25 ug Anti-Human CRTAM/CD355 Rabbit Recombinant Antibody (98157-1-RR, Clone: 241280B12) and



Biolayer interferometry (BLI) kinetic assays of 98157-1-RR against Human CRTAM/CD355 were performed. The affinity constant is 0.449 nM.