

For Research Use Only

Anti-Human TREM-1/CD354 Rabbit Recombinant Antibody

Catalog Number: 98154-1-RR



Basic Information

Catalog Number:

98154-1-RR

Size:

100ug, 1000 ug/ml

Source:

Rabbit

Isotype:

IgG

GenBank Accession Number:

NM_018643.5

GeneID (NCBI):

54210

UNIPROT ID:

Q9NP99-1

Full Name:

triggering receptor expressed on myeloid cells 1

Calculated MW:

26kDa

Purification Method:

Protein A purification

CloneNo.:

241279D10

Applications

Tested Applications:

FC

Species Specificity:

human

Background Information

Triggering receptor expressed on myeloid cells 1 (TREM-1, also known as CD354) is a member of the immunoglobulin superfamily, which is expressed on neutrophils and monocytes. TREM1 plays a role in the innate immune system. TREM1 amplifies neutrophil and monocyte-mediated inflammatory responses triggered by bacterial and fungal infections by stimulating release of pro-inflammatory chemokines and cytokines, as well as increased surface expression of cell activation markers.

Storage

Storage:

Store at 2 - 8°C. Stable for one year after shipment.

Storage Buffer:

PBS with 0.09% sodium azide, pH 7.3.

For technical support and original validation data for this product please contact:

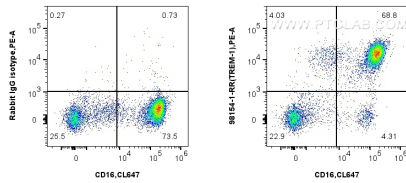
T: 4006900926

E: Proteintech-CN@ptglab.com

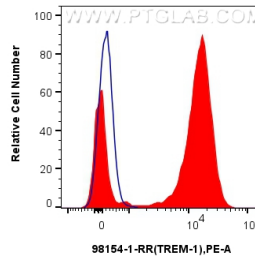
W: ptgcn.com

This product is exclusively available under Proteintech Group brand and is not available to purchase from any other manufacturer.

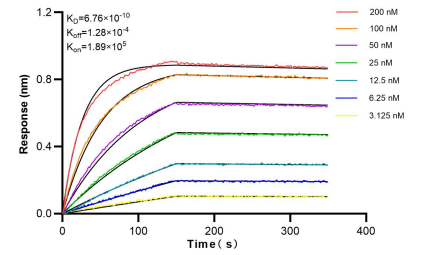
Selected Validation Data



1x10⁶ human peripheral blood leukocytes were surface stained with 0.25 ug Anti-Human TREM-1/CD354 Rabbit Recombinant Antibody (98154-1-RR, Clone: 241279D10) or Isotype Control, and PE-Conjugated Goat Anti-Rabbit IgG(H+L). Cells were co-stained with CoraLite® Plus 647 Anti-Human CD16. Cells were incubated with FC Receptor Block prior to staining. Cells were not fixed.



1x10⁶ human peripheral blood leukocytes were surface stained with 0.25 ug Anti-Human TREM-1/CD354 Rabbit Recombinant Antibody (98154-1-RR, Clone: 241279D10)(red) or Isotype Control (blue), and PE-Conjugated Goat Anti-Rabbit IgG(H+L). Cells were incubated with FC Receptor Block prior to staining. Cells were not fixed.



Biolayer interferometry (BLI) kinetic assays of 98154-1-RR against Human TREM-1/CD354 were performed. The affinity constant is 0.676 nM.