

For Research Use Only

Anti-Mouse CD138/Syndecan-1 Rabbit Recombinant Antibody, PBS Only

Catalog Number: 98152-1-PBS



Basic Information

Catalog Number:

98152-1-PBS

Size:

1mg, 2 mg/ml

Source:

Rabbit

Isotype:

IgG

GenBank Accession Number:

NM_011519.2

GeneID (NCBI):

20969

UNIPROT ID:

P18828-1

Full Name:

syndecan 1

Calculated MW:

33 kDa

Purification Method:

Protein A purification

CloneNo.:

241278C7

Applications

Tested Applications:

FC

Species Specificity:

mouse

Background Information

CD138, also named as Syndecan-1 (SDC1), is an integral membrane protein. It participates in cell proliferation, cell migration and cell-matrix interactions via its receptor for extracellular matrix proteins. It is a heparan sulfate proteoglycan expressed on the surface of, and actively shed by, myeloma cells. Altered syndecan-1 expression has been detected in several different tumor types. CD138 was regarded as a useful marker for labeling normal and neoplastic plasma cells and plasmacytoid lymphomas.

Storage

Storage:

Store at -80°C.

The product is shipped with ice packs. Upon receipt, store it immediately at -80°C

Storage Buffer:

PBS Only

For technical support and original validation data for this product please contact:

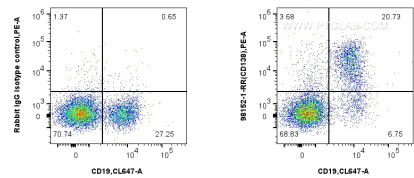
T: 4006900926

E: Proteintech-CN@ptglab.com

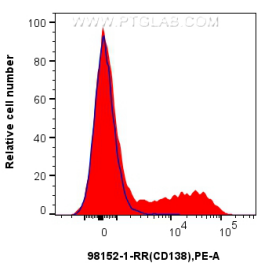
W: ptgcn.com

This product is exclusively available under Proteintech Group brand and is not available to purchase from any other manufacturer.

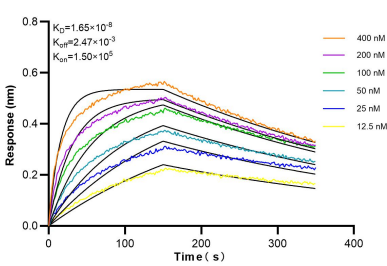
Selected Validation Data



1x10⁶ mouse bone marrow cells were surface stained with 0.25 ug Anti-Mouse CD138/Syndecan-1 Rabbit Recombinant Antibody (98152-1-RR, Clone:241278C7) or Isotype Control, and PE-Conjugated Goat Anti-Rabbit IgG(H+L). Cells were co-stained with CoraLite® Plus 647 Anti-Mouse CD19 (1D3) (CL647-65290, Clone: 1D3). Cells were not fixed. This data was developed using the same antibody clone with 98152-1-PBS in a different storage buffer formulation.



1x10⁶ mouse bone marrow cells were surface stained with 0.25 ug Anti-Mouse CD138/Syndecan-1 Rabbit Recombinant Antibody (98152-1-RR, Clone:241278C7) (red) or Isotype Control (blue), and PE-Conjugated Goat Anti-Rabbit IgG(H+L). Cells were not fixed. This data was developed using the same antibody clone with 98152-1-PBS in a different storage buffer formulation.



Biolayer interferometry (BLI) kinetic assays of 98152-1-RR against Mouse CD138/Syndecan-1 were performed. The affinity constant is 16.5 nM.