

For Research Use Only

# Anti-Human IL-18R1/CD218a Rabbit Recombinant Antibody

Catalog Number: 98150-2-RR



## Basic Information

Catalog Number:

98150-2-RR

Concentration:

100ug, 1000 ug/ml

Source:

Rabbit

Isotype:

IgG

GenBank Accession Number:

BC093975

GeneID (NCBI):

8809

UNIPROT ID:

Q13478

Full Name:

interleukin 18 receptor 1

Calculated MW:

541 aa, 62 kDa

Purification Method:

Protein A purification

CloneNo.:

241673D3

Recommended Dilutions:

FC: 0.25 ug per 10<sup>6</sup> cells in 100  $\mu$ l suspension

## Applications

Tested Applications:

FC

Species Specificity:

human

Positive Controls:

FC : human peripheral blood leukocytes,

## Background Information

IL-18R1 (CD218a) is a component of the interleukin-18 receptor (IL-18R) complex, which is critical for the signaling of IL-18, a pro-inflammatory cytokine. This receptor complex, consisting of IL-18R1 and the IL-18 receptor accessory protein (IL-18RAP), belongs to the immunoglobulin-like family of interleukin-1 receptors (PMID: 35461924). IL-18R1 plays a significant role in inducing the production of interferon-gamma (IFN- $\gamma$ ) and other inflammatory cytokines, contributing to innate and adaptive immune responses (PMID: 2550053). It is also suggested to play a role in hypertension and chronic kidney disease, where the IL-18/IL-18R1 signaling axis may have diagnostic and therapeutic potential (PMID: 35461924).

## Storage

Storage:

Store at 2 - 8°C. Stable for one year after shipment.

Storage Buffer:

PBS with 0.09% sodium azide, pH7.3

For technical support and original validation data for this product please contact:

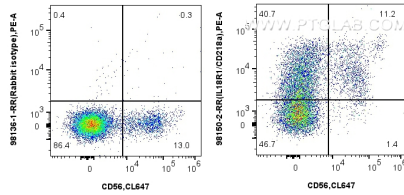
T: 4006900926

E: [Proteintech-CN@ptglab.com](mailto:Proteintech-CN@ptglab.com)

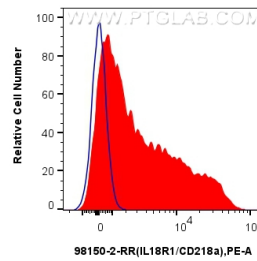
W: [ptgcn.com](http://ptgcn.com)

This product is exclusively available under Proteintech Group brand and is not available to purchase from any other manufacturer.

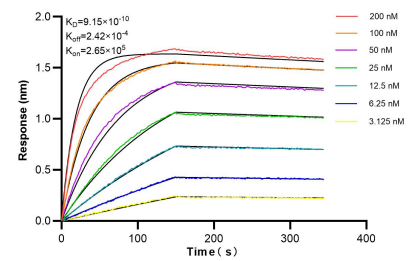
## Selected Validation Data



1x10<sup>6</sup> human PBMCs were surface stained with 0.25 ug Anti-Human IL-18R1/CD218a Rabbit Recombinant Antibody (98150-2-RR, Clone:241673D3) or Rabbit IgG Isotype Control Recombinant Antibody (98136-1-RR, Clone: 240953C9) and PE-conjugated Goat Anti-Rabbit IgG. Cells were co-stained with CoraLite® Plus 647 Anti-Human NCAM1/CD56. Cells were incubated with FC Receptor Block prior to staining. Cells were not fixed.



1x10<sup>6</sup> human peripheral blood leukocytes were surface stained with 0.25 ug Anti-Human IL-18R1/CD218a Rabbit Recombinant Antibody (98150-2-RR, Clone: 241673D3) (red) or Rabbit IgG Isotype Control Recombinant Antibody (98136-1-RR, Clone: 240953C9)(blue), and PE-conjugated Goat Anti-Rabbit IgG. Cells were incubated with FC Receptor Block prior to staining. Cells were not fixed.



Biolayer interferometry (BLI) kinetic assays of 98150-2-RR against Human IL-18R1/CD218a were performed. The affinity constant is 0.915 nM.