

For Research Use Only

Anti-Human IGF1R/CD221 Rabbit Recombinant Antibody, PBS Only

Catalog Number: 98144-1-PBS



Basic Information

Catalog Number:

98144-1-PBS

Concentration:

1mg, 2 mg/ml

Source:

Rabbit

Isotype:

IgG

GenBank Accession Number:

BC113612

GeneID (NCBI):

3480

UNIPROT ID:

P08069

Full Name:

IGF I receptor

Calculated MW:

1367 aa, 155 kDa

Purification Method:

Protein A purification

CloneNo.:

241679A6

Applications

Tested Applications:

FC

Species Specificity:

human

Background Information

IGF1R, also named as CD221, is a receptor tyrosine kinase which mediates actions of INS-like growth factor 1 (IGF1). IGF1R binds IGF1 with high affinity and IGF2 and INS with a lower affinity, the activated IGF1R is involved in cell growth and survival control. It is crucial for tumor transformation and survival of malignant cells. IGF1R is a heterotetrameric receptor, composed of two alpha subunits (130 kDa each) and two beta subunits (~98 kDa each) (PMID: 6279656). Both the alpha and beta subunits are synthesized from a single mRNA precursor. The precursor is then glycosylated, proteolytically cleaved, and crosslinked by cysteine bonds.

Storage

Storage:

Store at -80°C.

The product is shipped with ice packs. Upon receipt, store it immediately at -80°C

Storage Buffer:

PBS Only

For technical support and original validation data for this product please contact:

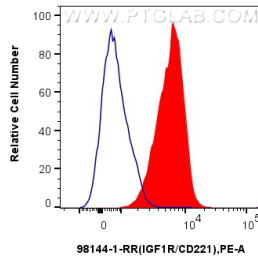
T: 4006900926

E: Proteintech-CN@ptglab.com

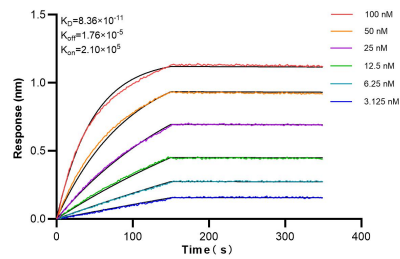
W: ptgcn.com

This product is exclusively available under Proteintech Group brand and is not available to purchase from any other manufacturer.

Selected Validation Data



1x10⁶ human peripheral blood granulocytes were surface stained with 0.25 ug Anti-Human IGF1R/CD221 Rabbit Recombinant Antibody (98144-1-RR, Clone: 241679A6)(red) or Rabbit IgG Isotype Control Recombinant Antibody (98136-1-RR, Clone: 240953C9) (blue) and PE-conjugated Goat Anti-Rabbit IgG. Cells were not fixed. This data was developed using the same antibody clone with 98144-1-PBS in a different storage buffer formulation.



Biolayer interferometry (BLI) kinetic assays of 98144-1-RR against Human IGF1R/CD221 were performed. The affinity constant is 83.6 pM.