

For Research Use Only

Anti-Human IL-1 beta Rabbit Recombinant Antibody

Catalog Number: 98142-1-RR



Basic Information

Catalog Number:

98142-1-RR

Concentration:

100ug, 1000 ug/ml

Source:

Rabbit

Isotype:

IgG

Immunogen Catalog Number:

EG0286

GenBank Accession Number:

BC008678

GeneID (NCBI):

3553

ENSEMBL Gene ID:

ENSG00000125538

UNIPROT ID:

P01584

Full Name:

interleukin 1, beta

Calculated MW:

269 aa, 31 kDa

Purification Method:

Protein A purification

CloneNo.:

240902A3

Recommended Dilutions:

FC (Intra): 0.25 ug per 10⁶ cells in

100 μ l suspension

Applications

Tested Applications:

FC (Intra)

Species Specificity:

human

Positive Controls:

FC (Intra) : IFN gamma, LPS and Brefeldin A treated human PBMCs,

Background Information

Interleukin-1 is a pro-inflammatory cytokine with multiple biological effects. The IL-1 gene family encodes three proteins: IL-1 α , IL-1 β and their naturally occurring inhibitor IL-1RN. IL-1 Beta (IL-1 β), mainly produced by blood monocytes and tissue macrophages, has been implicated in mediating both acute and chronic inflammation. IL-1 β is known to be involved in a variety of cellular activities, including cell proliferation, differentiation and apoptosis. IL-1 β is emerging as a key mediator of carcinogenesis that characterizes host-environment interactions.

Storage

Storage:

Store at 2 - 8°C. Stable for one year after shipment.

Storage Buffer:

PBS with 0.09% sodium azide, pH7.3

For technical support and original validation data for this product please contact:

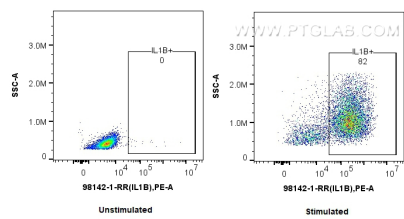
T: 4006900926

E: Proteintech-CN@ptglab.com

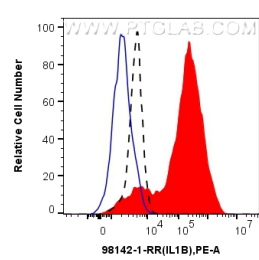
W: ptgcn.com

This product is exclusively available under Proteintech Group brand and is not available to purchase from any other manufacturer.

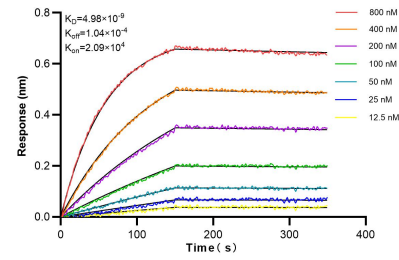
Selected Validation Data



1x10⁶ untreated or IFN gamma, LPS and Brefeldin A treated human PBMCs were intracellularly stained with 0.25 ug Anti-Human IL-1 beta Rabbit Recombinant Antibody (98142-1-RR, Clone: 240902A3) and PE-Conjugated Goat Anti-Rabbit IgG(H+L). Cells were fixed with 4% PFA and permeabilized with Flow Cytometry Perm Buffer.



1x10⁶ IFN gamma, LPS and Brefeldin A treated human PBMCs were intracellularly stained with 0.25 ug Anti-Human IL-1 beta Rabbit Recombinant Antibody (98142-1-RR, Clone: 240902A3) (red) or Isotype Control (blue) and PE-Conjugated Goat Anti-Rabbit IgG(H+L). 1x10⁶ unstimulated human PBMCs were intracellularly stained with 0.25 ug Anti-Human IL-1 beta Rabbit Recombinant Antibody (98142-1-RR, Clone: 240902A3) (black, dashed) and PE-Conjugated Goat Anti-



Biolayer interferometry (BLI) kinetic assays of 98142-1-RR against Human IL-1 beta were performed. The affinity constant is 4.98 nM.