

For Research Use Only

Anti-Human PDGFR alpha/CD140a Rabbit Recombinant Antibody, PBS Only (Detector)

Catalog Number: 98141-1-PBS



Basic Information

Catalog Number:

98141-1-PBS

Concentration:

1mg, 2 mg/ml

Source:

Rabbit

Isotype:

IgG

GenBank Accession Number:

BC015186

GeneID (NCBI):

5156

UNIPROT ID:

P16234

Full Name:

platelet-derived growth factor
receptor, alpha polypeptide

Calculated MW:

123 kDa

Purification Method:

Protein A purification

CloneNo.:

241658H4

Applications

Tested Applications:

FC, Cytometric bead array, Sandwich ELISA, Indirect
ELISA, Sample test

Species Specificity:

human

Background Information

Platelet-derived growth factor receptor alpha (PDGFR alpha, also known as CD140a) is a cell surface tyrosine kinase receptor for members of the platelet-derived growth factor family. PDGFRA is implicated in the regulation of embryonic development, tumorigenesis, cell proliferation, survival, and chemotaxis. Mutations in the PDGFRA gene have been associated with idiopathic hypereosinophilic syndrome, somatic and familial gastrointestinal stromal tumors, and a variety of other cancers.

Storage

Storage:

Store at -80°C.

The product is shipped with ice packs. Upon receipt, store it immediately at -80°C

Storage Buffer:

PBS only, pH7.3

For technical support and original validation data for this product please contact:

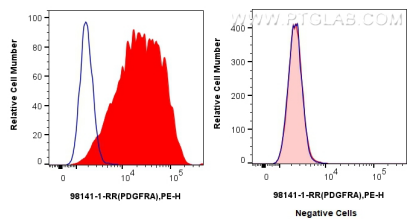
T: 4006900926

E: Proteintech-CN@ptglab.com

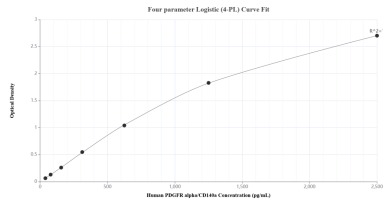
W: ptgcn.com

This product is exclusively available under Proteintech Group brand and is not available to purchase from any other manufacturer.

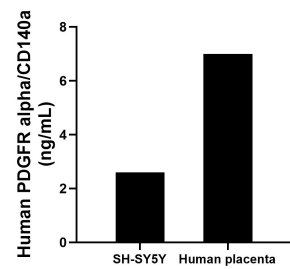
Selected Validation Data



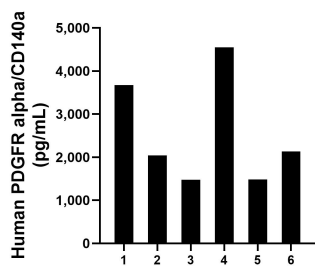
1x10⁶ MG-63 cells (left) or A-172 cells (right) were surface stained with 0.25 ug Anti-Human PDGFR alpha/CD140a Rabbit Recombinant Antibody (98141-1-RR, Clone: 241658H4) (red) or Isotype Control (blue), and PE-Conjugated Goat Anti-Rabbit IgG(H+L). Cells were not fixed. This data was developed using the same antibody clone with 98141-1-PBS in a different storage buffer formulation.



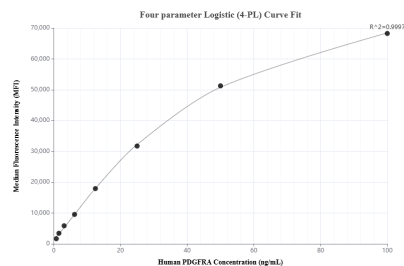
Sandwich ELISA standard curve of MP01256-4, Human PDGFR alpha/CD140a Recombinant Matched Antibody Pair - PBS only. 84383-7-PBS was coated to a plate as the capture antibody and incubated with serial dilutions of standard RP00003. 98141-1-PBS was HRP conjugated as the detection antibody. Range: 39.1-2500 pg/mL



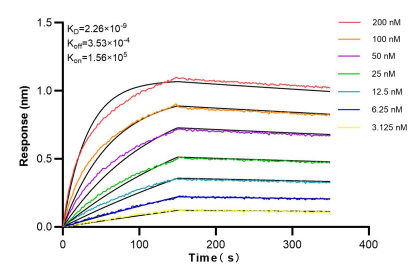
The mean PDGFR alpha/CD140a concentration was determined to be 2.6 ng/mL in SH-SY5Y cell extract based on a 1.0 mg/mL extract load and 7.0 ng/mL in human placenta tissue extract based on a 1.7 mg/mL extract load.



Serum of six individual healthy human donors was measured. The PDGFR alpha/CD140a concentration of detected samples was determined to be 2,557.7 pg/mL with a range of 1,472.3-4,545.6 pg/mL



Cytometric bead array standard curve of MP01256-1, PDGFR alpha/CD140a Recombinant Matched Antibody Pair, PBS Only. Capture antibody: 84383-5-PBS. Detection antibody: 98141-1-PBS. Standard: RP00003. Range: 0.781-100 ng/mL



Bilayer interferometry (BLI) kinetic assays of 98141-1-RR against Human PDGFR alpha/CD140a were performed. The affinity constant is 2.26 nM.