

For Research Use Only

Anti-Human CXCL8/IL-8 Rabbit Recombinant Antibody

Catalog Number: 98137-1-RR



Basic Information

Catalog Number:

98137-1-RR

Concentration:

100ug, 1000 ug/ml

Source:

Rabbit

Isotype:

IgG

Immunogen Catalog Number:

EG0152

GenBank Accession Number:

BC013615

GeneID (NCBI):

3576

ENSEMBL Gene ID:

ENSG00000169429

UNIPROT ID:

P10145

Full Name:

interleukin 8

Calculated MW:

99 aa, 11 kDa

Purification Method:

Protein A purification

CloneNo.:

240889B2

Recommended Dilutions:

FC (Intra): 0.25 ug per 10⁶ cells in

100 μ l suspension

Applications

Tested Applications:

FC (Intra)

Species Specificity:

human

Positive Controls:

FC (Intra) : IFN gamma, LPS and Brefeldin A treated human PBMCs,

Background Information

Interleukin 8 (IL-8), also known as CXCL8, is a CXC chemokine family member. This chemokine is secreted by a variety of cell types including monocyte/macrophages, T cells, neutrophils, fibroblasts, endothelial cells, and various tumor cell lines in response to inflammatory stimuli. IL-8 has two primary functions. It induces chemotaxis in target cells, primarily neutrophils but also other granulocytes, causing them to migrate toward the site of infection. IL-8 also induces phagocytosis once they have arrived. This gene is believed to play a role in the pathogenesis of bronchiolitis, a common respiratory tract disease caused by viral infection. IL-8 is also known to be a potent promoter of angiogenesis. IL-8 has been associated with tumor angiogenesis, metastasis, and poor prognosis in breast cancer. IL-8 may present a novel therapeutic target for estrogen driven breast carcinogenesis and tumor progression.

Storage

Storage:

Store at 2 - 8°C. Stable for one year after shipment.

Storage Buffer:

PBS with 0.09% sodium azide, pH7.3

For technical support and original validation data for this product please contact:

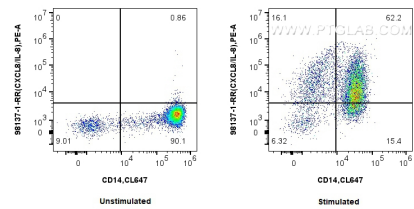
T: 4006900926

E: Proteintech-CN@ptglab.com

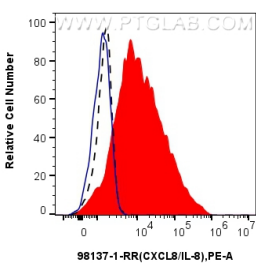
W: ptgcn.com

This product is exclusively available under Proteintech Group brand and is not available to purchase from any other manufacturer.

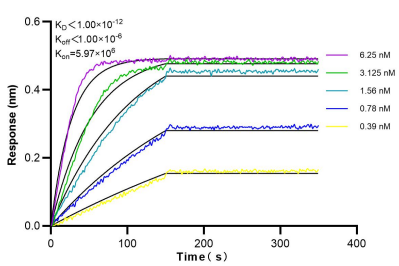
Selected Validation Data



1x10⁶ untreated or IFN gamma, LPS and Brefeldin A treated human PBMCs were intracellularly stained with 0.25 ug Anti-Human CXCL8/IL-8 Rabbit Recombinant Antibody (98137-1-RR, Clone: 240889B2) and PE-Conjugated Goat Anti-Rabbit IgG(H+L). Cells were co-stained with CoraLite® Plus 647 Anti-Human CD14 Rabbit Recombinant Antibody (CL647-98040, Clone: 230332D7). Cells were fixed with 4% PFA and permeabilized with Flow Cytometry Perm



1x10⁶ IFN gamma, LPS and Brefeldin A treated human PBMCs were intracellularly stained with 0.25 ug Anti-Human CXCL8/IL-8 Rabbit Recombinant Antibody (98137-1-RR, Clone: 240889B2) (red) or Rabbit IgG Isotype Control Recombinant Antibody (98136-1-RR, Clone: 240953C9) (blue) and PE-Conjugated Goat Anti-Rabbit IgG(H+L). 1x10⁶ untreated human PBMCs were intracellularly stained with 0.25 ug Anti-Human CXCL8/IL-8 Rabbit Recombinant Antibody (98137-1-RR, Clone:



Bioluminescence resonance transfer (BLIT) kinetic assays of 98137-1-RR against Human CXCL8/IL-8 were performed. The affinity constant is below 1 pM.