

For Research Use Only

Rabbit IgG Isotype Control Recombinant Antibody

Catalog Number: 98136-1-RR

1 Publications



Basic Information

Catalog Number:

98136-1-RR

Concentration:

100ug, 1000 ug/ml

Source:

Rabbit

Isotype:

IgG

GenBank Accession Number:

GeneID (NCBI):

Full Name:

Purification Method:

Protein A purification

CloneNo.:

240953C9

Recommended Dilutions:

WB 1:500-1:2000

IHC 1:250-1:1000

IF/ICC 1:50-1:500

Applications

Tested Applications:

WB, IHC, IF/ICC, FC, FC (Intra), IP

Cited Applications:

IP

Species Specificity:

n/a

Positive Controls:

WB :

IHC :

IF/ICC :

Note-IHC: suggested antigen retrieval with TE buffer pH 9.0; (*) Alternatively, antigen retrieval may be performed with citrate buffer pH 6.0

Background Information

This product is an isotype control antibody, which is used to estimate the non-specific binding of target primary antibodies due to Fc receptor binding or other protein-protein interactions. An isotype control antibody should have the same immunoglobulin type and be used at the same concentration as the test antibody.

Notable Publications

Author	Pubmed ID	Journal	Application
Hai-Qi Wu	39984622	Acta Pharmacol Sin	IP

Storage

Storage:

Store at 2 - 8°C. Stable for one year after shipment.

Storage Buffer:

PBS with 0.09% sodium azide, pH7.3

For technical support and original validation data for this product please contact:

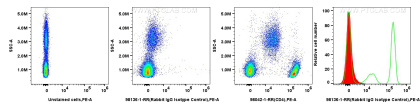
T: 4006900926

E: Proteintech-CN@ptglab.com

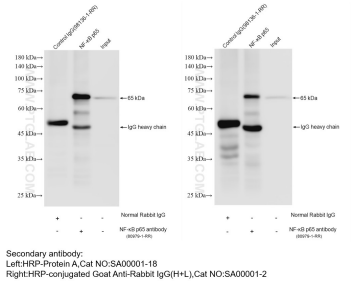
W: ptgcn.com

This product is exclusively available under Proteintech Group brand and is not available to purchase from any other manufacturer.

Selected Validation Data

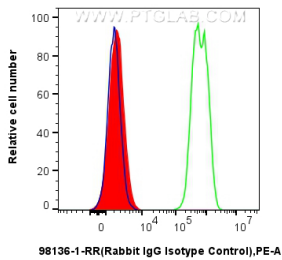
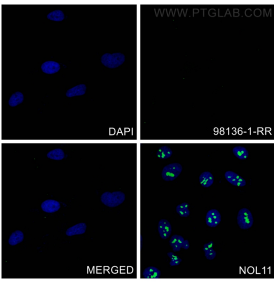


1x10⁶ human PBMCs were surface stained with 0.2 ug Rabbit IgG Isotype Control Recombinant Antibody (98136-1-RR, Clone: 240953C9) and PE-Conjugated Goat Anti-Rabbit IgG(H+L) (red in histogram), or 0.2 ug Anti-Human CD4 Rabbit Recombinant Antibody (98042-1-RR) and PE-Conjugated Goat Anti-Rabbit IgG(H+L) (green in histogram), or unstained (blue in histogram). Cells were not fixed.

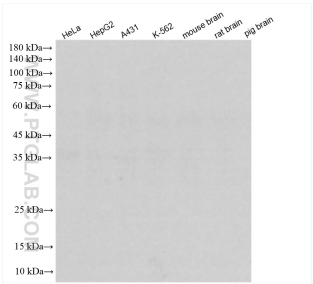


IP result of anti-IgG Isotype Control (IP:98136-1-RR, 4ug; Detection:98136-1-RR 1:0) with HepG2 cells lysate 2000 ug.

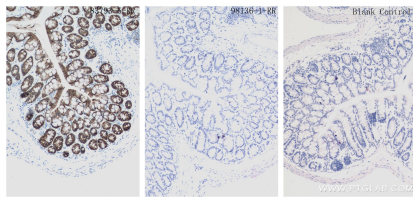
Immunofluorescent analysis of (4% PFA) fixed HeLa cells using IgG Isotype Control antibody (98136-1-RR, Clone: 240953C9) at dilution of 1:200 and CoraLite®488-Conjugated Goat Anti-Rabbit IgG(H+L) (SA00013-2). NOL11 Recombinant antibody (83391-6-RR) is a positive control.



1x10⁶ SH-SY5Y cells were intracellularly stained with 0.2 ug Rabbit IgG Isotype Control Recombinant Antibody (98136-1-RR, Clone:240953C9) and PE-Conjugated Goat Anti-Rabbit IgG(H+L) (red), or 0.2 ug PGF Recombinant antibody (83170-4-RR, Clone:230532H3) and APC-Conjugated AffiniPure Goat Anti-Rabbit IgG(H+L) (green), or unstain (blue). Cells were fixed with 4% PFA and permeabilized with Flow Cytometry Perm Buffer (PF00011-C).



HeLa cells were subjected to SDS PAGE followed by western blot with 98136-1-RR (IgG Isotype Control antibody) at dilution of 1:1000 incubated at room temperature for 1.5 hours.



Immunohistochemical analysis of paraffin-embedded mouse colon tissue slide using 98136-1-RR (IgG Isotype Control antibody) at dilution of 2 ug/mL or 83793-5-RR (Cadherin-17 Recombinant antibody) or unstained (under 10x lens). Heat mediated antigen retrieval with Tris-EDTA buffer (pH 9.0).