

For Research Use Only

# Anti-Human CD244 Rabbit Recombinant Antibody, PBS Only

Catalog Number: 98133-1-PBS



## Basic Information

Catalog Number:

98133-1-PBS

Size:

1mg, 2 mg/ml

Source:

Rabbit

Isotype:

IgG

GenBank Accession Number:

BC053985

GeneID (NCBI):

51744

UNIPROT ID:

Q9BZW8

Full Name:

CD244 molecule, natural killer cell  
receptor 2B4

Calculated MW:

365 aa, 41 kDa

Purification Method:

Protein A purification

CloneNo.:

241260G10

## Applications

Tested Applications:

FC

Species Specificity:

human

## Background Information

CD244, also known as SLAMF4 or 2B4, is a type I transmembrane glycoprotein belonging to the signaling lymphocyte activation molecule (SLAM) family. It consists of an extracellular segment with two immunoglobulin (Ig)-like domains, a transmembrane region, and a cytoplasmic domain containing tyrosine-based motifs (PMID: 9841922; 30546369). CD244 is present on natural killer (NK) cells,  $\gamma \delta$  T cells, a subset of CD8<sup>+</sup> T cells, monocytes, basophils, dendritic cells, and myeloid-derived suppressor cells (MDSCs) (PMID: 30546369). It binds to CD48 with high affinity and transmits stimulatory or inhibitory signals that regulate immune function (PMID: 9841922; 18523281).

## Storage

Storage:

Store at -80°C.

**The product is shipped with ice packs. Upon receipt, store it immediately at -80°C**

Storage Buffer:

PBS Only

For technical support and original validation data for this product please contact:

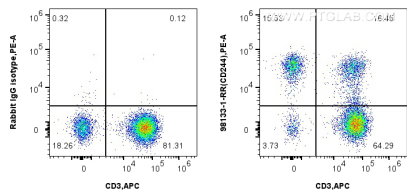
T: 4006900926

E: [Proteintech-CN@ptglab.com](mailto:Proteintech-CN@ptglab.com)

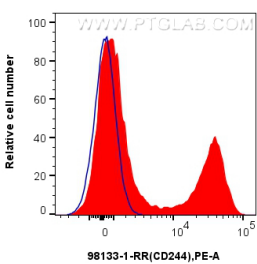
W: [ptgcn.com](http://ptgcn.com)

**This product is exclusively available under Proteintech Group brand and is not available to purchase from any other manufacturer.**

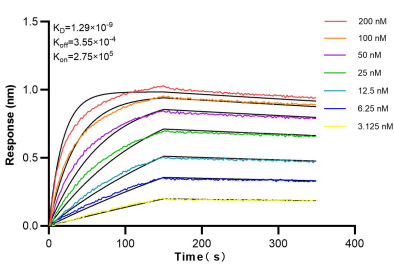
Selected Validation Data



1x10<sup>6</sup> human PBMCs were surface stained with 0.25 ug Anti-Human CD244 Rabbit Recombinant Antibody (98133-1-RR, Clone: 241260G10) or Isotype Control, and PE-Conjugated Goat Anti-Rabbit IgG(H+L). Cells were co-stained with APC Anti-Human CD3 (OKT3) Mouse IgG2a Recombinant Antibody (APC-65569, Clone: OKT3). Cells were incubated with FC Receptor Block prior to staining. Cells were not fixed. This data was developed using the same antibody clone



1x10<sup>6</sup> human PBMCs were surface stained with 0.25 ug Anti-Human CD244 Rabbit Recombinant Antibody (98133-1-RR, Clone:241260G10) (red) or Isotype Control (blue), and PE-Conjugated Goat Anti-Rabbit IgG(H+L). Cells were incubated with FC Receptor Block prior to staining. Cells were not fixed. This data was developed using the same antibody clone with 98133-1-PBS in a different storage buffer formulation.



Biolayer interferometry (BLI) kinetic assays of 98133-1-RR against Human CD244 were performed. The affinity constant is 1.29 nM.