

# Anti-Human CD324 (E-cadherin) Rabbit Recombinant Antibody, PBS Only

Catalog Number: 98123-1-PBS

## Basic Information

<b>Catalog Number:</b> 98123-1-PBS	<b>GenBank Accession Number:</b> NM_004360.5	<b>Purification Method:</b> Protein A purification
<b>Size:</b> 1mg, 2 mg/ml	<b>GeneID (NCBI):</b> 999	<b>CloneNo.:</b> 241098F7
<b>Source:</b> Rabbit	<b>UNIPROT ID:</b> P12830-1	
<b>Isotype:</b> IgG	<b>Full Name:</b> cadherin 1, type 1, E-cadherin (epithelial)	
	<b>Calculated MW:</b> 97 kDa	

## Applications

**Tested Applications:**  
FC

**Species Specificity:**  
human

## Background Information

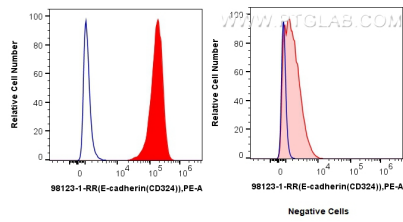
Cadherins are a family of transmembrane glycoproteins that mediate calcium-dependent cell-cell adhesion and play an important role in the maintenance of normal tissue architecture. E-cadherin (epithelial cadherin), also known as CD324, CDH1 (cadherin 1) or CAM 120/80, is a classical member of the cadherin superfamily which also include N-, P-, R-, and B-cadherins. E-cadherin is expressed on the cell surface in most epithelial tissues. The extracellular region of E-cadherin establishes calcium-dependent homophilic trans binding, providing specific interaction with adjacent cells, while the cytoplasmic domain is connected to the actin cytoskeleton through the interaction with p120-,  $\alpha$ -,  $\beta$ -, and  $\gamma$ -catenin (plakoglobin). E-cadherin is important in the maintenance of the epithelial integrity, and is involved in mechanisms regulating proliferation, differentiation, and survival of epithelial cell. E-cadherin may also play a role in tumorigenesis. It is considered to be an invasion suppressor protein and its loss is an indicator of high tumor aggressiveness.

## Storage

**Storage:**  
Store at -80°C.  
**The product is shipped with ice packs. Upon receipt, store it immediately at -80°C**

**Storage Buffer:**  
PBS Only

## Selected Validation Data



1x10<sup>6</sup> MCF-7 cells (left) or Jurkat cells (right) were surface stained with 0.25 ug Anti-Human E-cadherin Rabbit Recombinant Antibody (98123-1-RR, Clone: 241098F7) and PE-Conjugated AffiniPure Goat Anti-Rabbit IgG(H+L) (red), or Isotype Control (blue). Cells were not fixed. This data was developed using the same antibody clone with 98123-1-PBS in a different storage buffer formulation.