

For Research Use Only

Anti-Human gp130/IL6ST Rabbit Recombinant Antibody

Catalog Number: 98121-2-RR



Basic Information

Catalog Number:

98121-2-RR

Concentration:

100ug, 1000 ug/ml

Source:

Rabbit

Isotype:

IgG

GenBank Accession Number:

NM_002184.3

GeneID (NCBI):

3572

UNIPROT ID:

P40189-1

Full Name:

interleukin 6 signal transducer
(gp130, oncostatin M receptor)

Calculated MW:

104 kDa

Purification Method:

Protein A purification

CloneNo.:

242292C9

Applications

Tested Applications:

FC

Species Specificity:

human

Background Information

Glycoprotein 130 (gp130, also known as IL6ST, CD130 or IL6-beta) is a ubiquitously expressed, signal-transducing receptor that serves as the signal transduction unit for IL-6 family of cytokines, including IL-6, IL-11, IL-27, leukemia inhibitory factor (LIF), OSM, ciliary neurotrophic factor (CNTF), cardiotrophin 1 (CT-1), and cardiotrophin-like cytokine (CLC) (PMID: 9143707; 20610800). These cytokines signal through the gp130/Jak/STAT pathway (PMID: 9716487). Binding of IL-6 to IL-6R induces gp130 homodimerization and formation of a high-affinity receptor complex, which activates Jaks. That causes phosphorylation of gp130 tyrosine residues which in turn activates STAT3. gp130 is a type I transmembrane protein, and can also exist as a soluble form (sgp130). sgp130 binds to sIL-6R/IL-6 complexes and prevents their interactions with membrane-anchored gp130 on target cells (PMID: 9815830).

Storage

Storage:

Store at 2 - 8°C. Stable for one year after shipment.

Storage Buffer:

PBS with 0.09% sodium azide, pH 7.3.

For technical support and original validation data for this product please contact:

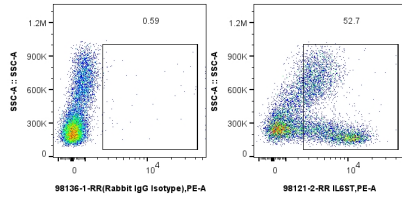
T: 4006900926

E: Proteintech-CN@ptglab.com

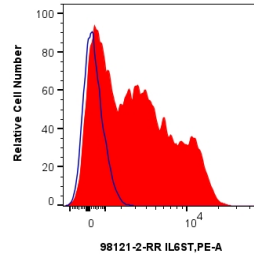
W: ptgcn.com

This product is exclusively available under Proteintech Group brand and is not available to purchase from any other manufacturer.

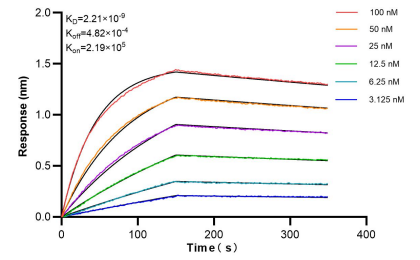
Selected Validation Data



1x10⁶ human PBMCs were surface stained with 0.25 ug Anti-Human gp130/IL6ST Rabbit RecAb (98121-2-RR, Clone:242292C9) or Rabbit IgG Isotype Control RecAb (98136-1-RR, Clone: 240953C9), and PE-Conjugated Goat Anti-Rabbit IgG(H+L). Cells were not fixed.



1x10⁶ human PBMCs were surface stained with 0.25 ug Anti-Human gp130/IL6ST Rabbit RecAb (98121-2-RR, Clone: 242292C9) (red) or Rabbit IgG Isotype Control RecAb (98136-1-RR, Clone: 240953C9) (blue), and PE-Conjugated Goat Anti-Rabbit IgG(H+L). Cells were not fixed.



Bioluminescence resonance energy transfer (BLI) kinetic assays of 98121-2-RR against Human gp130/IL6ST were performed. The affinity constant is 2.21 nM.