

For Research Use Only

# Anti-Human Neprilysin/CD10 Rabbit Recombinant Antibody, PBS Only

Catalog Number: 98116-1-PBS



## Basic Information

Catalog Number:

98116-1-PBS

Size:

1mg, 2 mg/ml

Source:

Rabbit

Isotype:

IgG

GenBank Accession Number:

BC101658

GeneID (NCBI):

4311

UNIPROT ID:

P08473

Full Name:

membrane metallo-endorpeptidase

Calculated MW:

750 aa, 86 kDa

Purification Method:

Protein A purification

CloneNo.:

241322E1

## Applications

Tested Applications:

FC

Species Specificity:

human

## Background Information

CD10, also known as neprilysin, membrane metallo-endorpeptidase (MME), neutral endopeptidase (NEP), or common acute lymphoblastic leukemia antigen (CALLA), is a 100-kDa type II transmembrane glycoprotein belonging to peptidase M13 family (PMID: 7760013; 8102558). Among hematopoietic cells, CD10 is expressed on granulocytes, B cell precursors, mature germinal center B cells, a subset of immature thymocytes (PMID: 13679451). CD10 is also expressed on a variety of nonhematopoietic cell types, including bronchial epithelial cells, cultured fibroblasts, bone marrow stromal cells, renal proximal tubular epithelial cells, breast myoepithelium, biliary canaliculi (PMID: 8102558). CD10 is a cell surface peptidase that cleaves peptide bonds on the amino side of hydrophobic amino acids and inactivates a variety of physiologically active peptides. Loss or decreases in CD10 expression have been reported in a variety of malignancies (PMID: 16054017).

## Storage

Storage:

Store at -80°C.

**The product is shipped with ice packs. Upon receipt, store it immediately at -80°C**

Storage Buffer:

PBS Only

For technical support and original validation data for this product please contact:

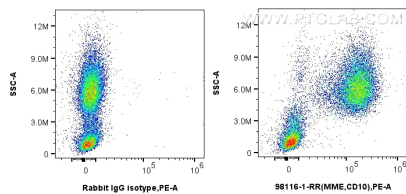
T: 4006900926

E: [Proteintech-CN@ptglab.com](mailto:Proteintech-CN@ptglab.com)

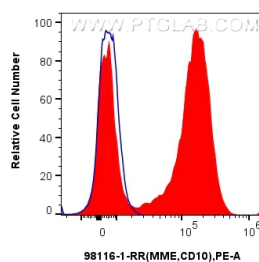
W: [ptgcn.com](http://ptgcn.com)

**This product is exclusively available under Proteintech Group brand and is not available to purchase from any other manufacturer.**

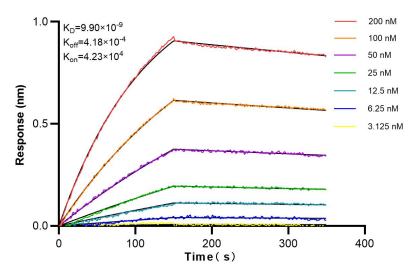
## Selected Validation Data



1x10<sup>6</sup> human peripheral blood leukocytes were surface stained with 0.25 ug Anti-Human Neprilysin/CD10 Rabbit Recombinant Antibody (98116-1-RR, Clone: 241322E1) or Isotype Control and PE-conjugated Goat Anti-Rabbit IgG. Cells were not fixed. This data was developed using the same antibody clone with 98116-1-PBS in a different storage buffer formulation.



1x10<sup>6</sup> human peripheral blood leukocytes were surface stained with 0.25 ug Anti-Human Neprilysin/CD10 Rabbit Recombinant Antibody (98116-1-RR, Clone:241322E1)(red) or Isotype Control (blue) and PE-conjugated Goat Anti-Rabbit IgG. Cells were not fixed. This data was developed using the same antibody clone with 98116-1-PBS in a different storage buffer formulation.



Biolayer interferometry (BLI) kinetic assays of 98116-1-RR against Human CD10 were performed. The affinity constant is 9.9 nM.