

For Research Use Only

Anti-Human CD84 Rabbit Recombinant Antibody, PBS Only

Catalog Number: 98108-1-PBS



Basic Information

Catalog Number:

98108-1-PBS

Size:

1mg, 2mg/ml

Source:

Rabbit

Isotype:

IgG

GenBank Accession Number:

BC020063

GeneID (NCBI):

8832

UNIPROT ID:

Q9UIB8

Full Name:

CD84 molecule

Calculated MW:

345 aa, 39 kDa

Purification Method:

Protein A purification

CloneNo.:

241345A3

Applications

Tested Applications:

FC, Cytometric bead array, Sandwich ELISA, Indirect ELISA, Sample test

Species Specificity:

human

Background Information

CD84, also known as SLAMF5, is a member of the CD2 subfamily of the immunoglobulin receptor superfamily (PMID: 9310491). CD84 is a single-chain type-I glycoprotein composed of two extracellular Ig-like domains, a hydrophobic transmembrane region, and a cytoplasmic domain. It is broadly expressed on almost all leukocyte subsets. CD84 functions as a homophilic adhesion molecule, whose signaling can activate or inhibit leukocyte function depending on the cell type and its stage of activation or differentiation (PMID: 30522694).

Storage

Storage:

Store at -80°C.

The product is shipped with ice packs. Upon receipt, store it immediately at -80°C

Storage Buffer:

PBS Only

For technical support and original validation data for this product please contact:

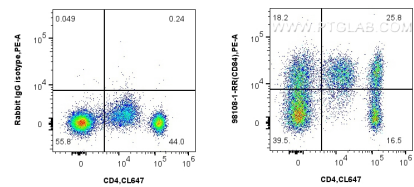
T: 4006900926

E: Proteintech-CN@ptglab.com

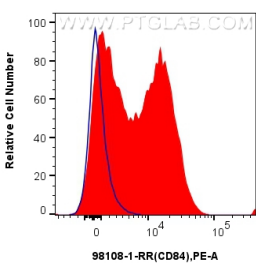
W: ptgcn.com

This product is exclusively available under Proteintech Group brand and is not available to purchase from any other manufacturer.

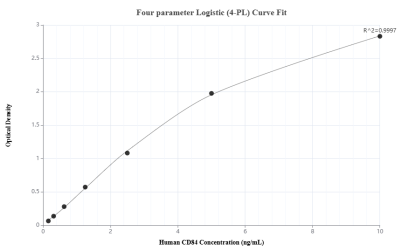
Selected Validation Data



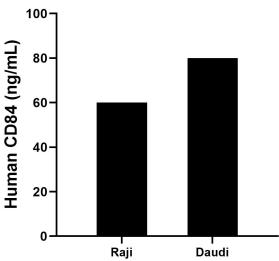
1x10⁶ human PBMCs were surface stained with 0.25 ug Anti-Human CD84 Rabbit Recombinant Antibody (98108-1-RR, Clone: 241345A3) or Isotype Control, and PE-Conjugated AffiniPure Goat Anti-Rabbit IgG(H+L). Cells were then stained with CoraLite® Plus 647 Anti-Human CD4 (OKT4). Cells were incubated with FC Receptor Block prior to staining. Cells were not fixed. This data was developed using the same antibody clone with 98108-1-PBS in a different storage



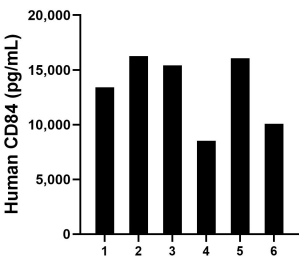
1x10⁶ human PBMCs were surface stained with 0.25 ug Anti-Human CD84 Rabbit Recombinant Antibody (98108-1-RR, Clone: 241345A3) or Isotype Control, and PE-Conjugated AffiniPure Goat Anti-Rabbit IgG(H+L). Cells were incubated with FC Receptor Block prior to staining. Cells were not fixed. This data was developed using the same antibody clone with 98108-1-PBS in a different storage buffer formulation.



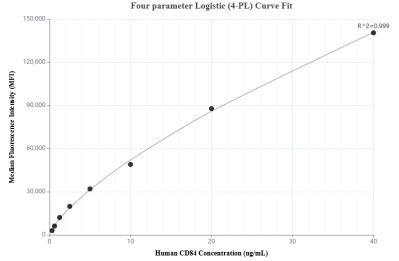
Sandwich ELISA standard curve of MP01112-2, Human CD84 Recombinant Matched Antibody Pair - PBS only. 84245-1-PBS was coated to a plate as the capture antibody and incubated with serial dilutions of standard RP02347. 98108-1-PBS was HRP conjugated as the detection antibody. Range: 0.156-10 ng/mL



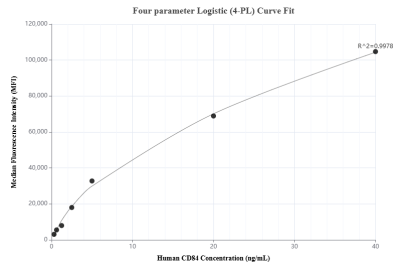
The mean CD84 concentration was determined to be 59.65 ng/mL in Raji cell extract based on a 1.0 mg/mL extract load and 79.95 ng/mL in Daudi cell extract based on a 1.8 mg/mL extract load.



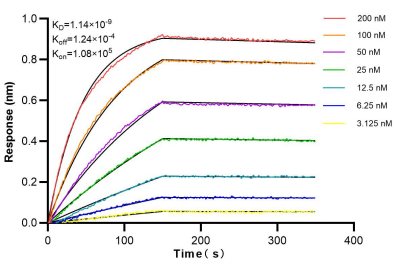
Serum of six individual healthy human donors was measured. The human CD84 concentration of detected samples was determined to be 13,292.9 pg/mL with a range of 8,538.9 - 16,254.6 pg/mL.



Cytometric bead array standard curve of MP01112-1, CD84 Recombinant Matched Antibody Pair, PBS Only. Capture antibody: 98108-1-PBS. Detection antibody: 84245-2-PBS. Standard: RP02347. Range: 0.313-40 ng/mL



Cytometric bead array standard curve of MP01112-2, CD84 Recombinant Matched Antibody Pair, PBS Only. Capture antibody: 84245-1-PBS. Detection antibody: 98108-1-PBS. Standard: RP02347. Range: 0.313-40 ng/mL



Biolayer interferometry (BLI) kinetic assays of 98108-1-RR against Human CD84 were performed. The affinity constant is 1.14 nM.