

For Research Use Only

Anti-Human CD39/ENTPD1 Rabbit Recombinant Antibody

Catalog Number: 98102-1-RR



Basic Information

Catalog Number:

98102-1-RR

Concentration:

100ug, 1000 ug/ml

Source:

Rabbit

Isotype:

IgG

GenBank Accession Number:

BC047664

GeneID (NCBI):

953

UNIPROT ID:

P49961

Full Name:

ectonucleoside triphosphate diphosphohydrolase 1

Calculated MW:

58 kDa

Purification Method:

Protein A purification

CloneNo.:

241292G7

Applications

Tested Applications:

FC

Species Specificity:

human

Background Information

ENTPD1 (Ectonucleoside triphosphate diphosphohydrolase 1) is also named CD39, NTPDase 1, and Ecto-ATPDase 1 and belongs to the GDA1/CD39 NTPase family. In the nervous system, it can hydrolyze ATP and other nucleotides to regulate purinergic neurotransmission. It is a noncovalent tetrameric protein and detergent inhibition of enzymatic activity is caused by dissociation of ectoapyrase tetramers into monomers (PMID: 9733785).

Storage

Storage:

Store at 2 - 8°C. Stable for one year after shipment.

Storage Buffer:

PBS with 0.09% sodium azide, pH 7.3.

For technical support and original validation data for this product please contact:

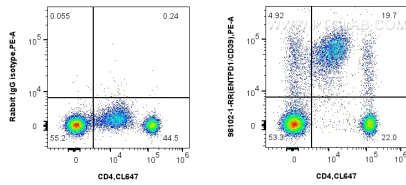
T: 4006900926

E: Proteintech-CN@ptglab.com

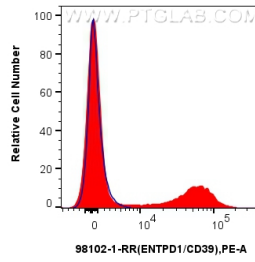
W: ptgcn.com

This product is exclusively available under Proteintech Group brand and is not available to purchase from any other manufacturer.

Selected Validation Data



1x10⁶ human PBMCs were surface stained with 0.25 ug Anti-Human CD39/ENTPD1 Rabbit Recombinant Antibody (98102-1-RR, Clone: 241292G7) or Isotype Control, and PE-Conjugated AffiniPure Goat Anti-Rabbit IgG(H+L). Cells were co-stained with CoraLite® Plus 647 Anti-Human CD4 (OKT4). Cells were incubated with FC Receptor Block prior to staining. Cells were not fixed.



1x10⁶ human PBMCs were surface stained with 0.25 ug Anti-Human CD39/ENTPD1 Rabbit Recombinant Antibody (98102-1-RR, Clone: 241292G7) or Isotype Control, and PE-Conjugated AffiniPure Goat Anti-Rabbit IgG(H+L). Cells were incubated with FC Receptor Block prior to staining. Cells were not fixed.