

For Research Use Only

Anti-Human CD39/ENTPD1 Rabbit Recombinant Antibody, PBS Only (Capture/Detector)

Catalog Number: 98102-1-PBS



Basic Information

Catalog Number:

98102-1-PBS

Concentration:

1mg, 2mg/ml

Source:

Rabbit

Isotype:

IgG

GenBank Accession Number:

BC047664

GeneID (NCBI):

953

UNIPROT ID:

P49961

Full Name:

ectonucleoside triphosphate diphosphohydrolase 1

Calculated MW:

58 kDa

Purification Method:

Protein A purification

CloneNo.:

241292G7

Applications

Tested Applications:

FC, Cytometric bead array, Sandwich ELISA, Indirect ELISA, Sample test

Species Specificity:

human

Background Information

ENTPD1 (Ectonucleoside triphosphate diphosphohydrolase 1) is also named CD39, NTPDase 1, and Ecto-ATPDase 1 and belongs to the GDA1/CD39 NTPase family. In the nervous system, it can hydrolyze ATP and other nucleotides to regulate purinergic neurotransmission. It is a noncovalent tetrameric protein and detergent inhibition of enzymatic activity is caused by dissociation of ectoapyrase tetramers into monomers (PMID: 9733785).

Storage

Storage:

Store at -80°C.

The product is shipped with ice packs. Upon receipt, store it immediately at -80°C

Storage Buffer:

PBS Only

For technical support and original validation data for this product please contact:

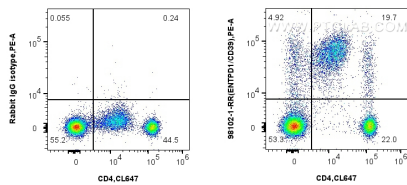
T: 4006900926

E: Proteintech-CN@ptglab.com

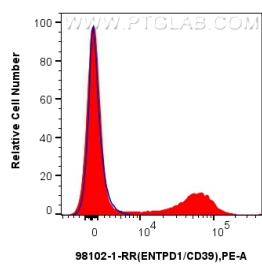
W: ptgcn.com

This product is exclusively available under Proteintech Group brand and is not available to purchase from any other manufacturer.

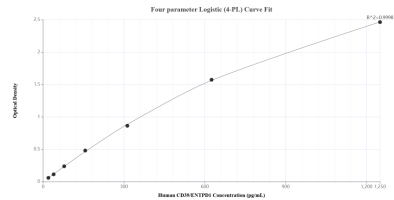
Selected Validation Data



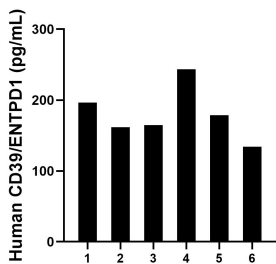
1x10⁶ human PBMCs were surface stained with 0.25 ug Anti-Human CD39/ENTPD1 Rabbit Recombinant Antibody (98102-1-RR, Clone: 241292G7) or Isotype Control, and PE-Conjugated AffiniPure Goat Anti-Rabbit IgG(H+L). Cells were co-stained with CoraLite® Plus 647 Anti-Human CD4 (OKT4). Cells were incubated with FC Receptor Block prior to staining. Cells were not fixed. This data was developed using the same antibody clone with 98102-1-PBS in a different storage



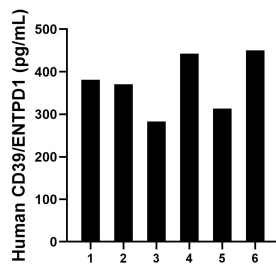
1x10⁶ human PBMCs were surface stained with 0.25 ug Anti-Human CD39/ENTPD1 Rabbit Recombinant Antibody (98102-1-RR, Clone: 241292G7) or Isotype Control, and PE-Conjugated AffiniPure Goat Anti-Rabbit IgG(H+L). Cells were incubated with FC Receptor Block prior to staining. Cells were not fixed. This data was developed using the same antibody clone with 98102-1-PBS in a different storage buffer formulation.



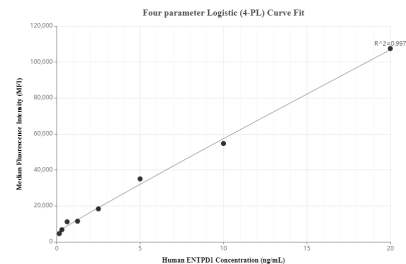
Sandwich ELISA standard curve of MP01143-1, Human CD39/ENTPD1 Recombinant Matched Antibody Pair - PBS only. 98102-1-PBS was coated to a plate as the capture antibody and incubated with serial dilutions of standard RP02313. 84235-2-PBS was HRP conjugated as the detection antibody. Range: 19.5-1250 pg/mL



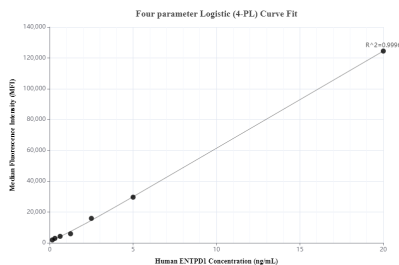
Plasma of six individual healthy human donors was measured. The CD39/ENTPD1 concentration of detected samples was determined to be 179.9 pg/mL with a range of 134.2-243.6 ng/mL



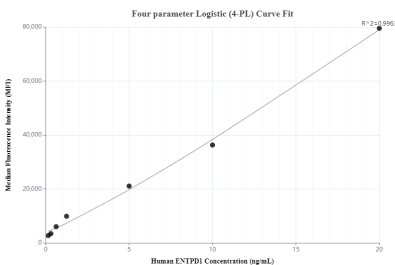
Serum of six individual healthy human donors was measured. The CD39/ENTPD1 concentration of detected samples was determined to be 373.5 pg/mL with a range of 283.0-450.4 pg/mL



Cytometric bead array standard curve of MP01143-1, ENTDP1/CD39 Recombinant Matched Antibody Pair, PBS Only. Capture antibody: 98102-1-PBS. Detection antibody: 84235-2-PBS. Standard: RP02313. Range: 0.156-20 ng/mL



Cytometric bead array standard curve of MP01143-2, ENTDP1/CD39 Recombinant Matched Antibody Pair, PBS Only. Capture antibody: 98102-1-PBS. Detection antibody: 84235-1-PBS. Standard: RP02313. Range: 0.156-20 ng/mL



Cytometric bead array standard curve of MP01143-3, ENTDP1/CD39 Recombinant Matched Antibody Pair, PBS Only. Capture antibody: 84235-3-PBS. Detection antibody: 98102-1-PBS. Standard: RP02313. Range: 0.156-20 ng/mL