

For Research Use Only

# Anti-Human ICAM3/CD50 Rabbit Recombinant Antibody

Catalog Number: 98097-1-RR



## Basic Information

<b>Catalog Number:</b> 98097-1-RR	<b>GenBank Accession Number:</b> BC058903	<b>Purification Method:</b> Protein A purification
<b>Size:</b> 100ug, 1000 ug/ml	<b>GeneID (NCBI):</b> 3385	<b>CloneNo.:</b> 241418E8
<b>Source:</b> Rabbit	<b>UNIPROT ID:</b> P32942	
<b>Isotype:</b> IgG	<b>Full Name:</b> intercellular adhesion molecule 3	
	<b>Calculated MW:</b> 547 aa, 60 kDa	

## Applications

**Tested Applications:**  
FC

**Species Specificity:**  
human

## Background Information

The intercellular adhesion molecule (ICAM) family is a subfamily of immunoglobulin superfamily with five known ICAM family members (ICAM1 to ICAM5) which play a role in inflammation, immune responses, and intracellular signaling (PMID: 23287428; 29477378). ICAM3, also known as CD50, is a type I transmembrane glycoprotein that contains five C2-type immunoglobulin-like domains in its extracellular region, a single transmembrane segment, and a C-terminus cytoplasmic tail. ICAM3 is selectively expressed on leukocytes (PMID: 1730916; 8132828). It is the primary ligand for LFA-1 and is involved in various immune processes, including T-cell activation, and macrophage recognition of apoptotic cells (PMID: 11812993; 23775590).

## Storage

**Storage:**  
Store at 2 - 8°C. Stable for one year after shipment.

**Storage Buffer:**  
PBS with 0.09% sodium azide, pH 7.3.

For technical support and original validation data for this product please contact:

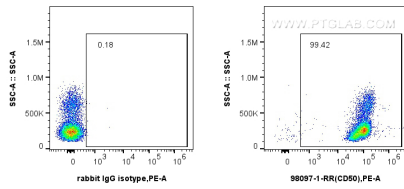
T: 4006900926

E: [Proteintech-CN@ptglab.com](mailto:Proteintech-CN@ptglab.com)

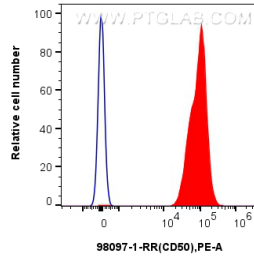
W: [ptgcn.com](http://ptgcn.com)

This product is exclusively available under Proteintech Group brand and is not available to purchase from any other manufacturer.

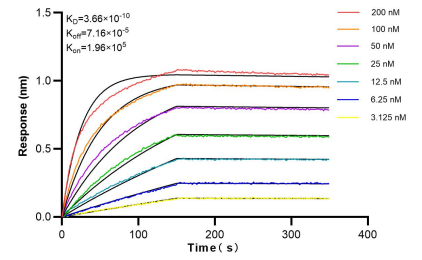
## Selected Validation Data



1x10<sup>6</sup> human PBMCs were surface stained with 0.25 ug Anti-Human ICAM3/CD50 Rabbit Recombinant Antibody (98097-1-RR, Clone:241418E8) or Isotype Control and PE-conjugated Goat Anti-Rabbit IgG. Cells were incubated with FC Receptor Block prior to staining. Cells were not fixed.



1x10<sup>6</sup> human PBMCs were surface stained with 0.25 ug Anti-Human ICAM3/CD50 Rabbit Recombinant Antibody (98097-1-RR, Clone:241418E8) or Isotype Control and PE-conjugated Goat Anti-Rabbit IgG. Cells were incubated with FC Receptor Block prior to staining. Cells were not fixed.



Biolayer interferometry (BLI) kinetic assays of 98097-1-RR against Human ICAM3/CD50 were performed. The affinity constant is 0.366 nM.