

For Research Use Only

Anti-Human ICAM3/CD50 Rabbit Recombinant Antibody, PBS Only (Capture)

Catalog Number: 98097-1-PBS



Basic Information

Catalog Number: 98097-1-PBS	GenBank Accession Number: BC058903	Purification Method: Protein A purification
Size: 1mg, 2mg/ml	GeneID (NCBI): 3385	CloneNo.: 241418E8
Source: Rabbit	UNIPROT ID: P32942	
Isotype: IgG	Full Name: intercellular adhesion molecule 3	
	Calculated MW: 547 aa, 60 kDa	

Applications

Tested Applications:
FC, Cytometric bead array, Indirect ELISA

Species Specificity:
human

Background Information

The intercellular adhesion molecule (ICAM) family is a subfamily of immunoglobulin superfamily with five known ICAM family members (ICAM1 to ICAM5) which play a role in inflammation, immune responses, and intracellular signaling (PMID: 23287428; 29477378). ICAM3, also known as CD50, is a type I transmembrane glycoprotein that contains five C2-type immunoglobulin-like domains in its extracellular region, a single transmembrane segment, and a C-terminus cytoplasmic tail. ICAM3 is selectively expressed on leukocytes (PMID: 1730916; 8132828). It is the primary ligand for LFA-1 and is involved in various immune processes, including T-cell activation, and macrophage recognition of apoptotic cells (PMID: 11812993; 23775590).

Storage

Storage:
Store at -80°C.
The product is shipped with ice packs. Upon receipt, store it immediately at -80°C

Storage Buffer:
PBS Only

For technical support and original validation data for this product please contact:

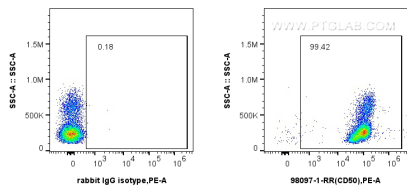
T: 4006900926

E: Proteintech-CN@ptglab.com

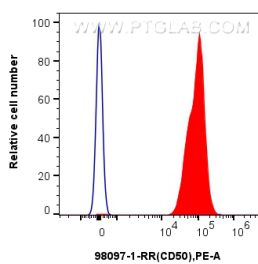
W: ptgcn.com

This product is exclusively available under Proteintech Group brand and is not available to purchase from any other manufacturer.

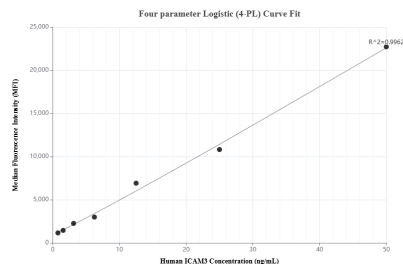
Selected Validation Data



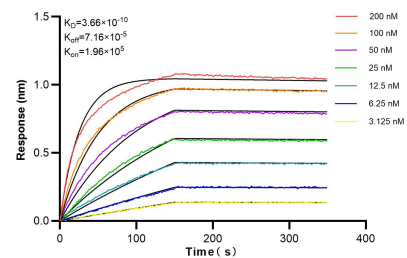
1x10⁶ human PBMCs were surface stained with 0.25 ug Anti-Human ICAM3/CD50 Rabbit Recombinant Antibody (98097-1-RR, Clone:241418E8) or Isotype Control and PE-conjugated Goat Anti-Rabbit IgG. Cells were incubated with FC Receptor Block prior to staining. Cells were not fixed. This data was developed using the same antibody clone with 98097-1-PBS in a different storage buffer formulation.



1x10⁶ human PBMCs were surface stained with 0.25 ug Anti-Human ICAM3/CD50 Rabbit Recombinant Antibody (98097-1-RR, Clone:241418E8) or Isotype Control and PE-conjugated Goat Anti-Rabbit IgG. Cells were incubated with FC Receptor Block prior to staining. Cells were not fixed. This data was developed using the same antibody clone with 98097-1-PBS in a different storage buffer formulation.



Cytometric bead array standard curve of MP01223-1, ICAM3/CD50 Recombinant Matched Antibody Pair, PBS Only. Capture antibody: 98097-1-PBS. Detection antibody: 84335-3-PBS. Standard: RP02342. Range: 0.781-50 ng/mL.



Bioluminescence resonance transfer (BLI) kinetic assays of 98097-1-RR against Human ICAM3/CD50 were performed. The affinity constant is 0.366 nM.