

For Research Use Only

Anti-Human BTLA/CD272 Rabbit Recombinant Antibody, PBS Only (Capture)

Catalog Number: 98096-1-PBS



Basic Information

Catalog Number: 98096-1-PBS	GenBank Accession Number: BC107091	Purification Method: Protein A purification
Concentration: 1mg, 2 mg/ml	GeneID (NCBI): 151888	CloneNo.: 241318H5
Source: Rabbit	UNIPROT ID: Q7Z6A9	
Isotype: IgG	Full Name: B and T Lymphocyte associated	
	Calculated MW: 289 aa, 33 kDa	

Applications

Tested Applications:
FC, Cytometric bead array, Indirect ELISA

Species Specificity:
human

Background Information

BTLA (B and T Lymphocyte attenuator), also known as CD272, is a member of the CD28 superfamily and is a type I membrane glycoprotein identified as an inhibitory receptor (PMID: 33859648). BTLA is extensively expressed in lymph nodes, thymus, and spleen, with little or no expression in organs such as the heart, kidney, brain, and liver (PMID: 33859648). Among immune cells, BTLA is primarily expressed in B and T cells, with higher expression in B cells compared to T cells in the mouse spleen (PMID: 33859648). BTLA plays a crucial role in regulating stimulatory and inhibitory signals in immune responses.

Storage

Storage:
Store at -80°C.
The product is shipped with ice packs. Upon receipt, store it immediately at -80°C

Storage Buffer:
PBS Only

For technical support and original validation data for this product please contact:

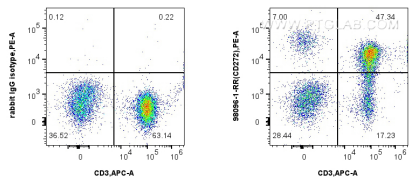
T: 4006900926

E: Proteintech-CN@ptglab.com

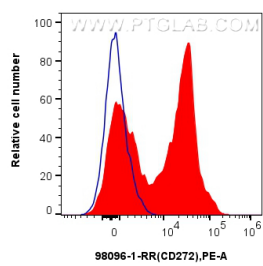
W: ptgcn.com

This product is exclusively available under Proteintech Group brand and is not available to purchase from any other manufacturer.

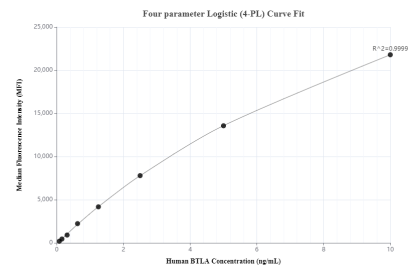
Selected Validation Data



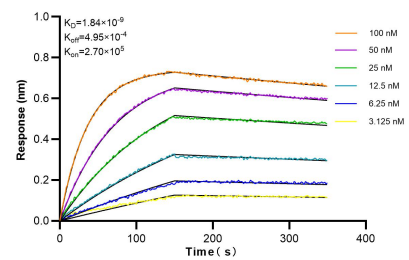
1x10⁶ human PBMCs were surface stained with 0.25 ug Anti-Human BTLA/CD272 Rabbit Recombinant Antibody (98096-1-RR, Clone: 241318H5) or Isotype Control and PE-conjugated Goat Anti-Rabbit IgG. Cells were co-stained with APC Anti-Human CD8 (UCHT4) Mouse IgG2a Recombinant Antibody (APC-65559, Clone: UCHT4). Cells were incubated with FC Receptor Block prior to staining. Cells were not fixed. Lymphocytes were gated. This data was developed using



1x10⁶ human PBMCs were surface stained with 0.25 ug Anti-Human BTLA/CD272 Rabbit Recombinant Antibody (98096-1-RR, Clone: 241318H5) or Isotype Control and PE-conjugated Goat Anti-Rabbit IgG. Cells were incubated with FC Receptor Block prior to staining. Cells were not fixed. Lymphocytes were gated. This data was developed using the same antibody clone with 98096-1-PBS in a different storage buffer formulation.



Cytometric bead array standard curve of MP01168-2, BTLA/CD272 Recombinant Matched Antibody Pair, PBS Only. Capture antibody: 98096-1-PBS. Detection antibody: 84262-2-PBS. Standard: RP02326. Range: 0.078-10 ng/mL.



Bioluminescence resonance transfer (BLI) kinetic assays of 98096-1-RR against Human BTLA/CD272 were performed. The affinity constant is 1.84 nM.