

For Research Use Only

# Anti-Mouse IL-2 Rabbit Recombinant Antibody, PBS Only

Catalog Number: 98055-1-PBS



## Basic Information

Catalog Number:

98055-1-PBS

Size:

1mg, 2mg/ml

Source:

Rabbit

Isotype:

IgG

GenBank Accession Number:

NM\_008366

GeneID (NCBI):

16183

UNIPROT ID:

P04351

Full Name:

interleukin 2

Calculated MW:

19 kDa

Purification Method:

Protein A purification

CloneNo.:

240358A2

## Applications

Tested Applications:

FC (Intra), Sandwich ELISA, Indirect ELISA, Sample test

Species Specificity:

mouse

## Background Information

Interleukin-2 (IL-2) is a four-helix bundle, type I cytokine that functions as a growth factor for a wide range of leukocytes. In the immune system, IL-2 is essential for immune homeostasis, normal T regulatory cell function, and self-tolerance. It regulates immune cell homeostasis and has been used to treat a range of disorders including cancer and autoimmune disease. IL-2 signals through heterodimerization of the IL-2R  $\beta$  and IL-2R  $\gamma$  receptor subunits (PMID: 25992858, 24907378, 15034008, 17981641).

## Storage

Storage:

Store at -80°C.

The product is shipped with ice packs. Upon receipt, store it immediately at -80°C

Storage Buffer:

PBS Only

For technical support and original validation data for this product please contact:

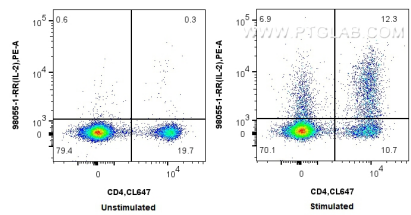
T: 4006900926

E: Proteintech-CN@ptglab.com

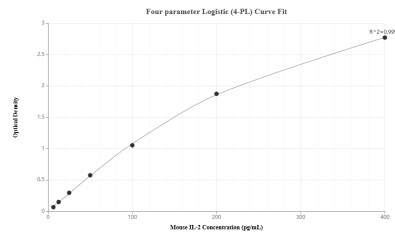
W: ptgcn.com

This product is exclusively available under Proteintech Group brand and is not available to purchase from any other manufacturer.

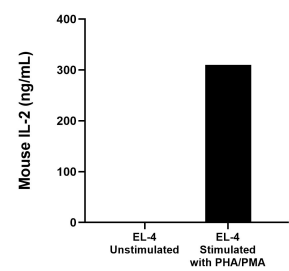
Selected Validation Data



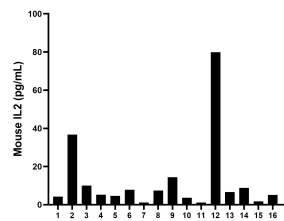
1x10<sup>6</sup> untreated or PMA, Ionomycin and Brefeldin A treated mouse splenocytes were intracellularly stained with 0.25 ug Anti-Mouse IL-2 Rabbit Recombinant Antibody (98055-1-RR, Clone: 240358A2) and PE-conjugated Goat Anti-Rabbit IgG. Cells were then stained with CoraLite® Plus 647 Anti-Mouse CD4. Cells were fixed with 4% PFA and permeabilized with Flow Cytometry Perm Buffer (PF00011-C). This data was developed using the same antibody clone with 98055-1-



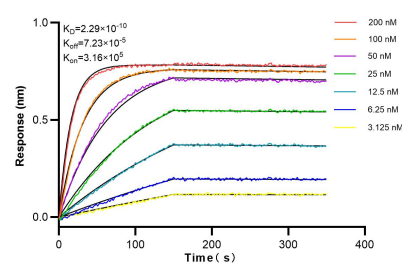
Sandwich ELISA standard curve of MP00533-3, mouse IL-2 Recombinant Matched Antibody Pair - PBS only. 98055-1-PBS was coated to a plate as the capture antibody and incubated with serial dilutions of standard Eg0762. 83547-1-PBS was HRP conjugated as the detection antibody. Range: 6.25-400 pg/mL



EL-4 mouse lymphoblast cells (1 x 10<sup>6</sup> cells/mL) were cultured for 3 days in DMEM supplemented with 10% fetal bovine serum and stimulated with 10  $\mu$ g/mL PHA and 10 ng/mL PMA. The mean mouse IL-2 concentration was determined to be 16.1 pg/mL in unstimulated EL-4, 309.9 ng/mL in PHA and PMA stimulated EL-4 supernatant.



Serum of sixteen mice was measured. were measured. The mouse IL-2 concentration was determined to be 2.27 pg/mL with a range of 1.1-79.9 pg/mL



Bioluminescence resonance transfer (BLI) kinetic assays of 98055-1-RR against Mouse IL-2 were performed. The affinity constant is 0.229 nM.