

For Research Use Only

# Anti-Human MCP-1/CCL2 Rabbit Recombinant Antibody

Catalog Number: 98044-1-RR



## Basic Information

Catalog Number:

98044-1-RR

Size:

100ug, 1000 ug/ml

Source:

Rabbit

Isotype:

IgG

GenBank Accession Number:

BC009716

GeneID (NCBI):

6347

UNIPROT ID:

P13500

Full Name:

chemokine (C-C motif) ligand 2

Calculated MW:

99 aa, 11 kDa

Purification Method:

Protein A purification

CloneNo.:

230270A7

## Applications

Tested Applications:

FC (Intra)

Species Specificity:

human

## Background Information

Monocyte chemoattractant protein 1 (MCP-1; also known as CCL2), is chemotactic for monocyte/macrophage, B-cell, and T-lymphocyte, and belongs to the CC subfamily of chemokines. Chemokines are a superfamily of secreted proteins involved in immunoregulatory and inflammatory processes. The human ortholog has been implicated in the pathogenesis of diseases characterized by monocytic infiltrates, such as psoriasis, rheumatoid arthritis, and atherosclerosis.

## Storage

Storage:

Store at 2-8°C. Stable for one year after shipment.

Storage Buffer:

PBS with 0.09% sodium azide.

For technical support and original validation data for this product please contact:

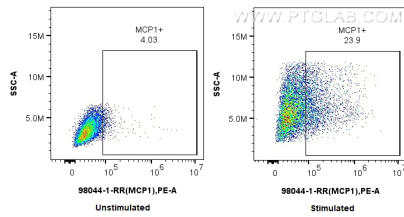
T: 4006900926

E: [Proteintech-CN@ptglab.com](mailto:Proteintech-CN@ptglab.com)

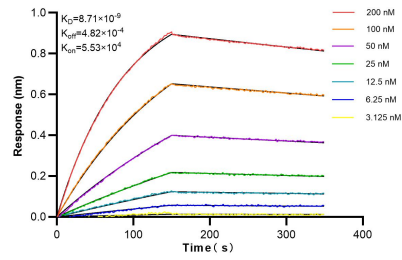
W: [ptgcn.com](http://ptgcn.com)

This product is exclusively available under Proteintech Group brand and is not available to purchase from any other manufacturer.

## Selected Validation Data



1x10<sup>6</sup> untreated or PMA, LPS and Brefeldin A treated THP-1 cells were intracellularly stained with 0.5 ug Anti-Human MCP-1 Rabbit Recombinant Antibody (98044-1-RR, Clone: 230270A7) and PE-conjugated Goat Anti-Rabbit IgG. Cells were fixed with 4% PFA and permeabilized with Flow Cytometry Perm Buffer (PF00011-C).



Biolayer interferometry (BLI) kinetic assays of 98044-1-RR against Human MCP-1/CCL2 were performed. The affinity constant is 8.71 nM.