

For Research Use Only

# Anti-Human CD14 Rabbit Recombinant Antibody

Catalog Number: 98040-1-RR



## Basic Information

Catalog Number:

98040-1-RR

Concentration:

100ug, 1000 µg/ml

Source:

Rabbit

Isotype:

IgG

Immunogen Catalog Number:

EG0498

GenBank Accession Number:

BC010507

GeneID (NCBI):

929

ENSEMBL Gene ID:

ENSG00000170458

UNIPROT ID:

P08571

Full Name:

CD14 molecule

Calculated MW:

375 aa, 40 kDa

Purification Method:

Protein A purification

CloneNo.:

230332D7

Recommended Dilutions:

FC: 0.25 ug per 10<sup>6</sup> cells in 100 µl suspension

## Applications

Tested Applications:

FC

Species Specificity:

human, monkey, non-human primates

Positive Controls:

FC : human PBMCs,

## Background Information

CD14 is a 50-55 kDa glycosylphosphatidylinositol-anchored glycoprotein preferentially expressed on monocytes and macrophages, and at lower levels on granulocytes (PMID: 3385210; 2462937; 7685797). CD14 can also exist as a soluble protein. CD14 acts as a co-receptor for bacterial liposaccharides (LPS) (PMID: 1698311). It plays a major role in the inflammatory response of monocytes to LPS.

## Storage

Storage:

Store at 2-8°C. Stable for one year after shipment.

Storage Buffer:

PBS with 0.09% sodium azide, pH7.3

For technical support and original validation data for this product please contact:

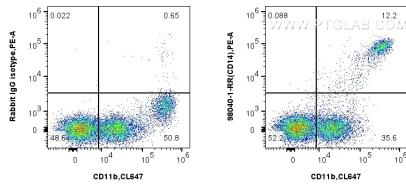
T: 4006900926

E: [Proteintech-CN@ptglab.com](mailto:Proteintech-CN@ptglab.com)

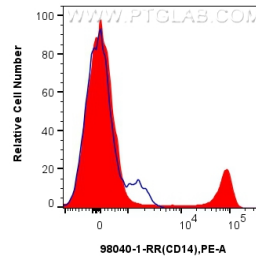
W: [ptgcn.com](http://ptgcn.com)

This product is exclusively available under Proteintech Group brand and is not available to purchase from any other manufacturer.

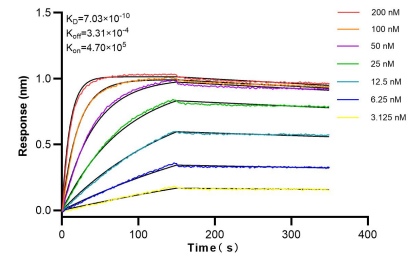
## Selected Validation Data



1x10<sup>6</sup> human PBMCs were surface stained with 0.25 ug Anti-Human CD14 Rabbit Recombinant Antibody (98040-1-RR, Clone: 230332D7) or 0.25 ug Isotype Control, and PE-conjugated Goat Anti-Rabbit IgG. Cells were co-stained with Coralite® Plus 647 Anti-Human CD11b. Cells were incubated with FC Receptor Block prior to staining. Cells were not fixed.



1x10<sup>6</sup> human PBMCs were surface stained with 0.25 ug Anti-Human CD14 Rabbit Recombinant Antibody (98040-1-RR, Clone: 230332D7) (red) or 0.25 ug Isotype Control (blue), and PE-conjugated Goat Anti-Rabbit IgG. Cells were incubated with FC Receptor Block prior to staining. Cells were not fixed.



Biolayer interferometry (BLI) kinetic assays of 98040-1-RR against Human CD14 were performed. The affinity constant is 0.703 nM.