

Anti-Human CD324 (E-cadherin) Rabbit Recombinant Antibody

Catalog Number: 98030-1-RR

Basic Information

Catalog Number: 98030-1-RR	GenBank Accession Number: BC141838	Purification Method: Protein A purification
Size: 100ug, 1000 ug/ml	GeneID (NCBI): 999	CloneNo.: 240159G8
Source: Rabbit	UNIPROT ID: P12830	
Isotype: IgG	Full Name: cadherin 1, type 1, E-cadherin (epithelial)	
Immunogen Catalog Number: AG14973	Calculated MW: 882 aa, 97 kDa	

Applications

Tested Applications:
FC

Species Specificity:
human

Background Information

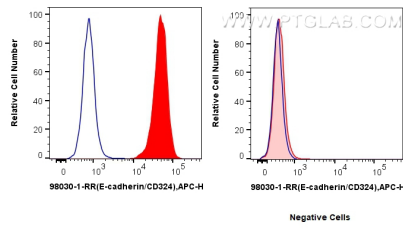
Cadherins are a family of transmembrane glycoproteins that mediate calcium-dependent cell-cell adhesion and play an important role in the maintenance of normal tissue architecture. E-cadherin (epithelial cadherin), also known as CD324, CDH1 (cadherin 1) or CAM 120/80, is a classical member of the cadherin superfamily which also include N-, P-, R-, and B-cadherins. E-cadherin is expressed on the cell surface in most epithelial tissues. The extracellular region of E-cadherin establishes calcium-dependent homophilic trans binding, providing specific interaction with adjacent cells, while the cytoplasmic domain is connected to the actin cytoskeleton through the interaction with p120-, α -, β -, and γ -catenin (plakoglobin). E-cadherin is important in the maintenance of the epithelial integrity, and is involved in mechanisms regulating proliferation, differentiation, and survival of epithelial cell. E-cadherin may also play a role in tumorigenesis. It is considered to be an invasion suppressor protein and its loss is an indicator of high tumor aggressiveness.

Storage

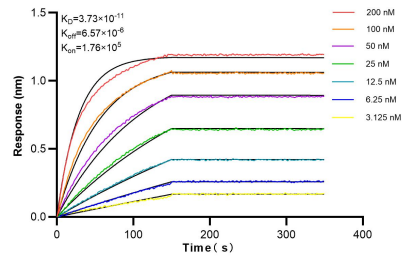
Storage:
Store at 2-8°C. Stable for one year after shipment.

Storage Buffer:
PBS with 0.09% sodium azide.

Selected Validation Data



1x10⁶ MCF-7 cells (left) or Jurkat cells (right) were surface stained with 0.25 ug Anti-Human CD324 (E-cadherin) Rabbit Recombinant Antibody (98030-1-RR, Clone: 240159G8) (red) or Isotype Control (blue), and APC-Conjugated AffiniPure Goat Anti-Rabbit IgG(H+L). Cells were not fixed.



Biolayer interferometry (BLI) kinetic assays of 98030-1-RR against Human E-cadherin were performed. The affinity constant is 37.3 pM.