

For Research Use Only

# Phospho-RAF1 (Ser259) Recombinant monoclonal antibody

Catalog Number: 88430-1-RR



## Basic Information

**Catalog Number:**

88430-1-RR

**Source:**

Rabbit

**Isotype:**

IgG

**GenBank Accession Number:**

BC018119

**GeneID (NCBI):**

5894

**UNIPROT ID:**

P04049

**Full Name:**

v-raf-1 murine leukemia viral oncogene homolog 1

**Calculated MW:**

648 aa, 73 kDa

**Observed MW:**

70-75 kDa

**Purification Method:**

Protein A purification

**CloneNo.:**

250953G5

**Recommended Dilutions:**

WB: 1:500-1:2000

## Applications

**Tested Applications:**

WB, ELISA

**Species Specificity:**

human

**Positive Controls:**

WB : HeLa cells,

## Background Information

Raf-1 proto-oncogene, serine/threonine kinase (RAF1), is a MAP kinase kinase kinase (MAP3K), which functions downstream of the Ras family of membrane associated GTPases to which it binds directly. Phospho-RAF1 (Ser259) is a key inhibitory modification of CRAF within the RAS-MEK-ERK cascade. Phosphorylated mainly by PKA and Akt, this residue recruits 14-3-3 proteins to lock RAF1 in an autoinhibited cytoplasmic conformation, blocking its membrane recruitment and binding to GTP-Ras. Dephosphorylation by PP2A relieves suppression to trigger ERK-driven proliferation. Elevated p-RAF1 (S259) dampens oncogenic MAPK signaling in tumors, while loss of this phosphorylation causes sustained pathway hyperactivation linked to Noonan syndrome and multiple malignancies. (PMID: 11971957, 11756411)

## Storage

**Storage:**

Store at -20°C. Stable for one year after shipment.

**Storage Buffer:**

PBS with 0.02% sodium azide and 50% glycerol, pH7.3

Aliquoting is unnecessary for -20°C storage

For technical support and original validation data for this product please contact:

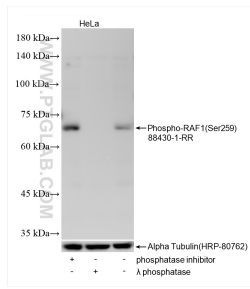
T: 4006900926

E: [Proteintech-CN@ptglab.com](mailto:Proteintech-CN@ptglab.com)

W: [ptgcn.com](http://ptgcn.com)

**This product is exclusively available under Proteintech Group brand and is not available to purchase from any other manufacturer.**

## Selected Validation Data



Non-treated HeLa cells, phosphatase inhibitor treated HeLa cells and  $\lambda$  phosphatase treated HeLa cells were subjected to SDS PAGE followed by western blot with 88430-1-RR (Phospho-RAF1 (Ser259) antibody) at dilution of 1:1000 incubated at room temperature for 1.5 hours. The membrane was stripped and re-blotted with Alpha Tubulin (HRP-80762) antibody as a loading control.